

## Product datasheet for **CS708221**

### Tissue FFPE Sections, Small intestine

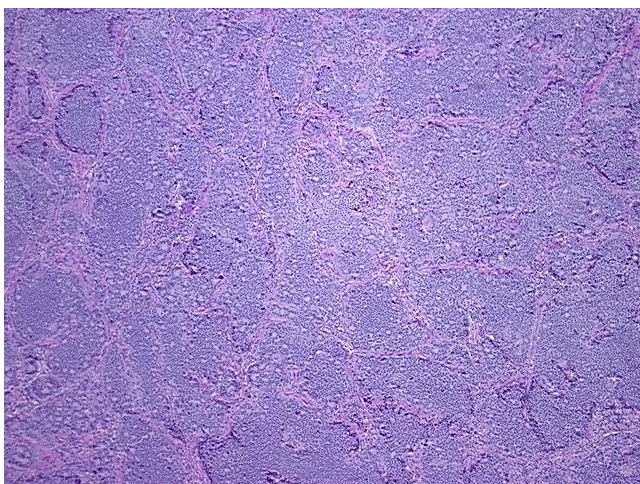
#### Product data:

Product Type:	FFPE Sections
Disease State:	Cancer
Diagnosis Category:	Carcinoid/Neuroendocrine Tumors
Tissue:	Small intestine
Frozen Sample ID:	PA1547888F
Case ID:	CI0000010054
Tissue of Origin:	Small intestine
Site of Finding:	Lymph node: mesenteric
Appearance:	T
Sample Diagnosis (from Pathology Verification):	Tumor of unknown origin, neuroendocrine, metastatic
Normal:	0%
Lesional:	0%
Tumor:	95%
Tumor Hypo/Acellular Stroma:	5%
Tumor Hypercellular Stroma:	0%
Necrosis:	0%
CASE Diagnosis (from medical center path report):	Adenocarcinoma of endometrium, serous
Age:	66
Gender:	Female
Race:	Black or African American
Tumor Grade:	FIGO G3: Poorly differentiated

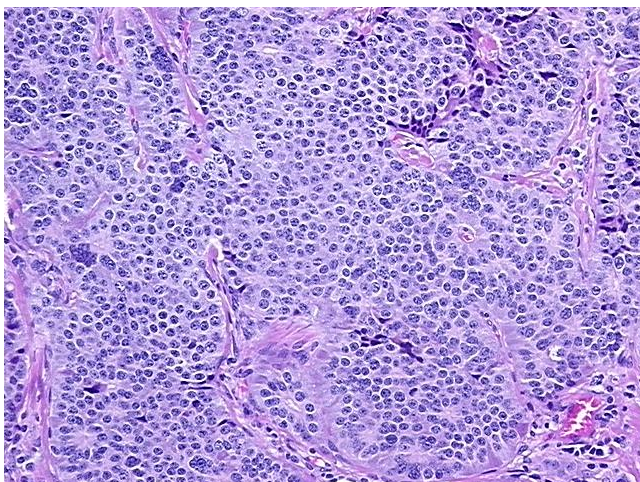


[View online »](#)

Minimum Stage Grouping:	IB
T (Extent of Primary Tumor):	T1b
N (Lymph node metastasis):	N0
M (Distant metastasis):	MX
Diagnostic Test Results:	Synaptophysin ~ SYN ! by IHC,Positive; Chromogranin A ~ Parathyroid secretory protein 1 ! by IHC,Positive
Storage:	Store FFPE tissue sections at +4°C.
Stability:	All FFPE tissue sections are stable for 1 year from date of purchase.

**Product images:**

4x Image



20x Image