

Product datasheet for **CS708150**

Tissue FFPE Sections, Lung

Product data:

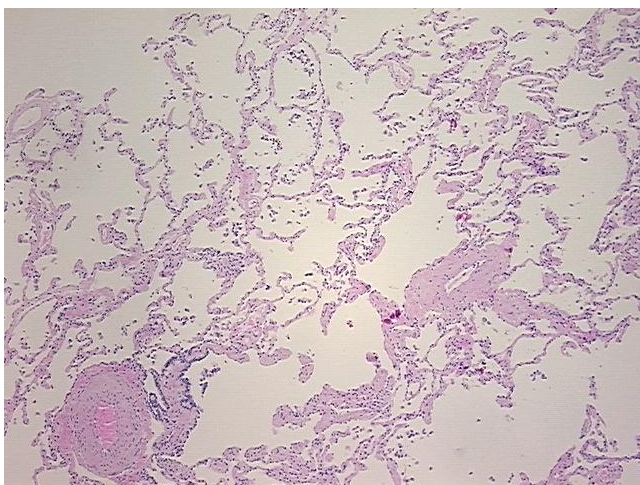
| | |
|---|---|
| Product Type: | FFPE Sections |
| Disease State: | Other Disease |
| Diagnosis Category: | Chronic Obstructive Pulmonary Disease (COPD) |
| Tissue: | Lung |
| Frozen Sample ID: | PA154770E7 |
| Case ID: | CI0000010007 |
| Tissue of Origin: | Lung |
| Site of Finding: | Lung |
| Appearance: | L |
| Sample Diagnosis (from Pathology Verification): | Emphysema |
| Normal: | 0% |
| Lesional: | 100% |
| Tumor: | 0% |
| Tumor Hypo/Acellular Stroma: | 0% |
| Tumor Hypercellular Stroma: | 0% |
| Necrosis: | 0% |
| Pathology Verification notes from H&E review: | 70% alveoli, 10% bronchioles, 20% fibrovascular septa |
| CASE Diagnosis (from medical center path report): | Adenocarcinoma of pancreas, metastatic |
| Age: | 74 |
| Gender: | Female |
| Race: | White or Caucasian |



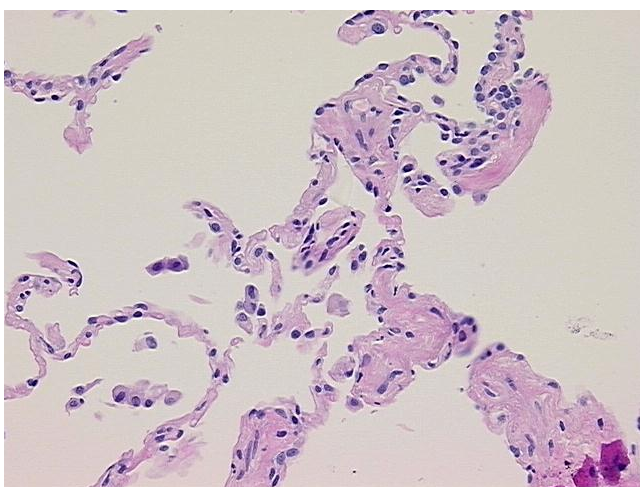
[View online »](#)

| | |
|------------------------------|--|
| Tumor Grade: | Not Reported |
| Minimum Stage Grouping: | IV |
| T (Extent of Primary Tumor): | TX |
| N (Lymph node metastasis): | NX |
| M (Distant metastasis): | M1 |
| Diagnostic Test Results: | Cytokeratin 7 ~ CK7 ! by IHC,Positive; Cytokeratin 20 ~ CK20 ! by IHC,Positive, focal; Cytokeratin CAM5.2 ~ CAM5.2 ! by IHC,Positive; Cytokeratin AE1/AE3 ~ AE1/AE3 ! by IHC,Positive; Thyroid transcription factor 1 ~ TTF1 ! by IHC,Negative |
| Storage: | Store FFPE tissue sections at +4°C. |
| Stability: | All FFPE tissue sections are stable for 1 year from date of purchase. |

Product images:



4x Image



20x Image