

## Product datasheet for **CS708067**

### Tissue FFPE Sections, Lung

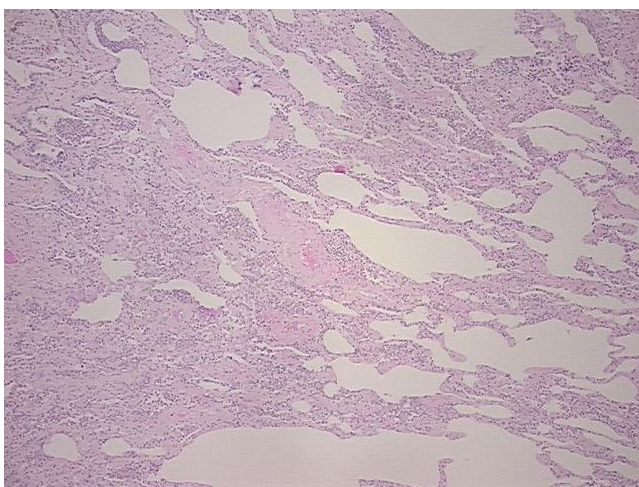
#### Product data:

Product Type:	FFPE Sections
Disease State:	Other Disease
Diagnosis Category:	Pneumonia
Tissue:	Lung
Frozen Sample ID:	PA15477A0F
Case ID:	CI0000009937
Tissue of Origin:	Lung
Site of Finding:	Lung
Appearance:	L
Sample Diagnosis (from Pathology Verification):	Pneumonia, post-obstructive
Normal:	70%
Lesional:	30%
Tumor:	0%
Tumor Hypo/Acellular Stroma:	0%
Tumor Hypercellular Stroma:	0%
Necrosis:	0%
Pathology Verification notes from H&E review:	normal: 60% alveoli, 5% bronchioles, 35% fibrovascular septa
CASE Diagnosis (from medical center path report):	Adenocarcinoma of lung
Age:	48
Gender:	Female
Race:	Black or African American

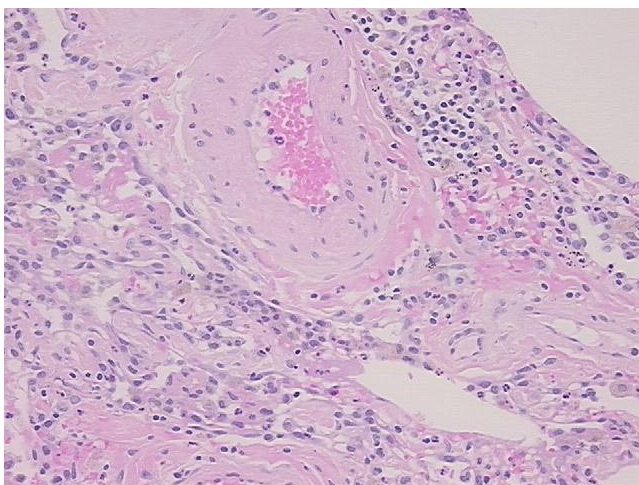


[View online »](#)

Tumor Grade:	AJCC G3: Poorly differentiated
Minimum Stage Grouping:	IB
T (Extent of Primary Tumor):	T2
N (Lymph node metastasis):	N0
M (Distant metastasis):	MX
Storage:	Store FFPE tissue sections at +4°C.
Stability:	All FFPE tissue sections are stable for 1 year from date of purchase.

**Product images:**

4x Image



20x Image