

## Product datasheet for **CS707974**

### Tissue FFPE Sections, Endometrium

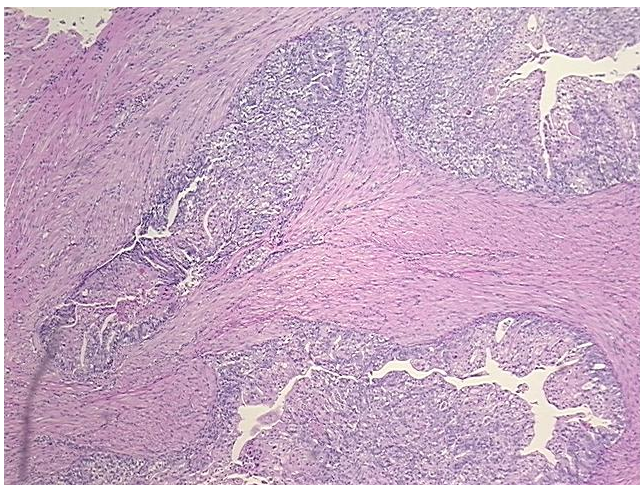
#### Product data:

|   |  |
|---|--|
| Product Type:                                     | FFPE Sections  |
| Disease State:                                    | Cancer   |
| Diagnosis Category:                               | Endometrial Cancer   |
| Tissue:   | Endometrium  |
| Frozen Sample ID:                                 | PA00006F42   |
| Case ID:  | CI0000009847   |
| Tissue of Origin:                                 | Endometrium  |
| Site of Finding:                                  | Uterus   |
| Appearance:                                       | T  |
| Sample Diagnosis (from Pathology Verification):   | Adenocarcinoma of endometrium, endometrioid  |
| Normal:   | 30%  |
| Lesional:   | 0%   |
| Tumor:  | 30%  |
| Tumor Hypo/Acellular Stroma:                      | 0%   |
| Tumor Hypercellular Stroma:                       | 20%  |
| Necrosis:   | 20%  |
| Pathology Verification notes from H&E review:     | Tumor: The tumor focally has mucinous differentiation. Some of the cells lining, with the glandular spaces have signet ring morphology |
| CASE Diagnosis (from medical center path report): | Adenocarcinoma of endometrium, endometrioid  |
| Age:  | 52   |
| Gender:   | Female   |
| Race:   | White or Caucasian   |

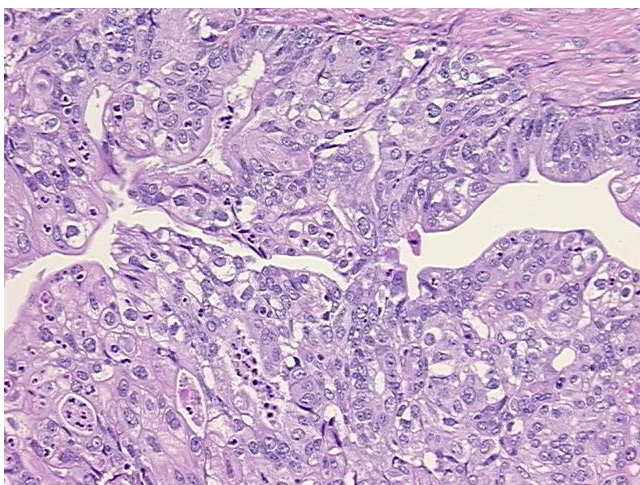


[View online »](#)

|                              |   |
|------------------------------|---|
| Tumor Grade:                 | FIGO G2: Moderately differentiated                                    |
| Minimum Stage Grouping:      | IVB   |
| T (Extent of Primary Tumor): | T1b   |
| N (Lymph node metastasis):   | N0  |
| M (Distant metastasis):      | M1  |
| Storage:                     | Store FFPE tissue sections at +4°C.                                   |
| Stability:                   | All FFPE tissue sections are stable for 1 year from date of purchase. |

**Product images:**

4x Image



20x Image