

Product datasheet for **CS707937**

Tissue FFPE Sections, Lung

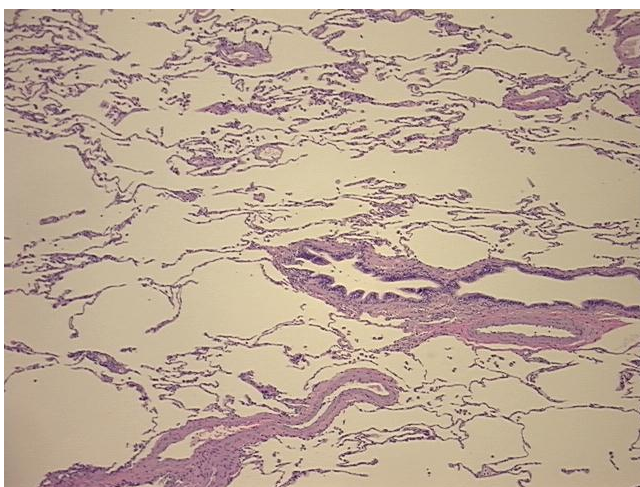
Product data:

Product Type:	FFPE Sections
Disease State:	Other Disease
Diagnosis Category:	Chronic Obstructive Pulmonary Disease (COPD)
Tissue:	Lung
Frozen Sample ID:	PA1547725B
Case ID:	CI0000009813
Tissue of Origin:	Lung
Site of Finding:	Lung
Appearance:	L
Sample Diagnosis (from Pathology Verification):	Emphysema, centrilobular
Normal:	0%
Lesional:	100%
Tumor:	0%
Tumor Hypo/Acellular Stroma:	0%
Tumor Hypercellular Stroma:	0%
Necrosis:	0%
Pathology Verification notes from H&E review:	Non Tumor Structures: 30% Alveoli, 55% Fibrovascular septa, 15% Bronchioles
CASE Diagnosis (from medical center path report):	Carcinoma of lung, squamous cell
Age:	61
Gender:	Male
Race:	White or Caucasian

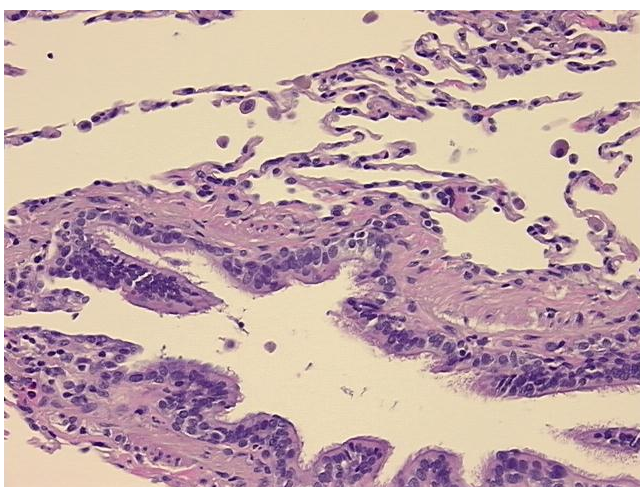


[View online »](#)

Tumor Grade:	Not Reported
Minimum Stage Grouping:	IIB
T (Extent of Primary Tumor):	T2
N (Lymph node metastasis):	N1
M (Distant metastasis):	MX
Storage:	Store FFPE tissue sections at +4°C.
Stability:	All FFPE tissue sections are stable for 1 year from date of purchase.

Product images:

4x Image



20x Image