

Product datasheet for **CS707880**

Tissue FFPE Sections, Endometrium

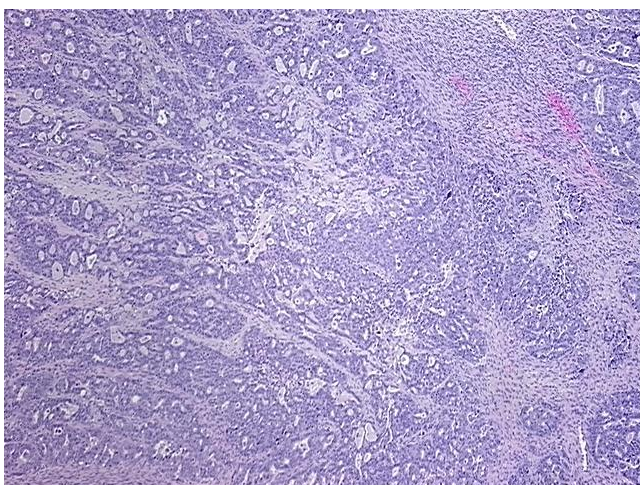
Product data:

Product Type:	FFPE Sections
Disease State:	Cancer
Diagnosis Category:	Endometrial Cancer
Tissue:	Endometrium
Frozen Sample ID:	PA154781C7
Case ID:	CI0000009783
Tissue of Origin:	Endometrium
Site of Finding:	Ovary
Appearance:	T
Sample Diagnosis (from Pathology Verification):	Adenocarcinoma of endometrium, serous, metastatic
Normal:	10%
Lesional:	0%
Tumor:	70%
Tumor Hypo/Acellular Stroma:	0%
Tumor Hypercellular Stroma:	10%
Necrosis:	10%
CASE Diagnosis (from medical center path report):	Adenocarcinoma of endometrium, serous
Age:	61
Gender:	Female
Race:	Black or African American
Tumor Grade:	FIGO G3: Poorly differentiated

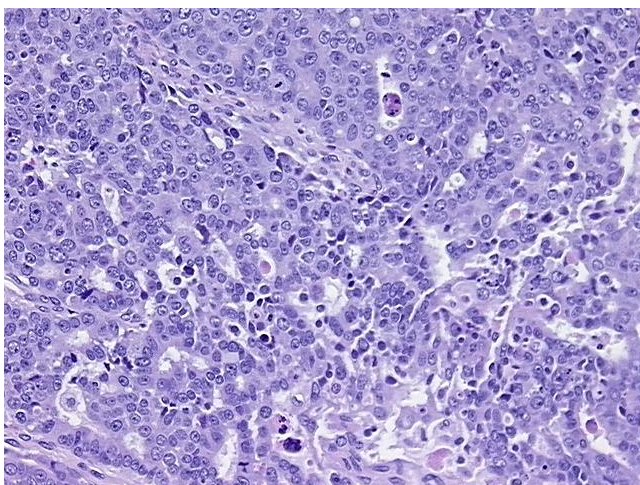


[View online »](#)

Minimum Stage Grouping:	IIIC
T (Extent of Primary Tumor):	T3c
N (Lymph node metastasis):	NX
M (Distant metastasis):	MX
Diagnostic Test Results:	p53 oncoprotein ~ TP53 ! by IHC,Positive; Synaptophysin ~ SYN ! by IHC,Positive; Cytokeratin 7 ~ CK7 ! by IHC,Positive; Cytokeratin 20 ~ CK20 ! by IHC,Negative; Chromogranin A ~ Parathyroid secretory protein 1 ! by IHC,Positive; CA125 ~ Ovaria
Storage:	Store FFPE tissue sections at +4°C.
Stability:	All FFPE tissue sections are stable for 1 year from date of purchase.

Product images:

4x Image



20x Image