

Product datasheet for **CS707794**

Tissue FFPE Sections, Cervix

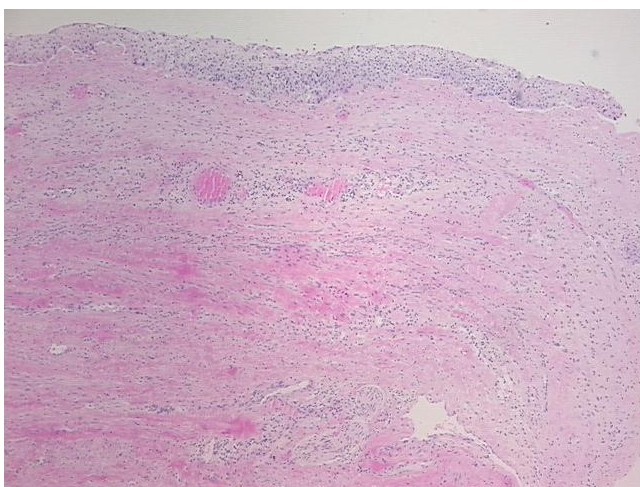
Product data:

| | |
|---|---|
| Product Type: | FFPE Sections |
| Disease State: | Cancer |
| Diagnosis Category: | Cervical Cancer |
| Tissue: | Cervix |
| Frozen Sample ID: | PA00006DFD |
| Case ID: | CI0000009757 |
| Tissue of Origin: | Cervix |
| Site of Finding: | Cervix |
| Appearance: | T |
| Sample Diagnosis (from Pathology Verification): | Carcinoma in situ of cervix, squamous cell |
| Normal: | 90% |
| Lesional: | 0% |
| Tumor: | 10% |
| Tumor Hypo/Acellular Stroma: | 0% |
| Tumor Hypercellular Stroma: | 0% |
| Necrosis: | 0% |
| Pathology Verification notes from H&E review: | 0% glandular epithelium, 0% squamous epithelium, 100% stroma, transformation zone (-) |
| CASE Diagnosis (from medical center path report): | Carcinoma in situ of cervix, squamous cell |
| Age: | 89 |
| Gender: | Female |
| Race: | White or Caucasian |

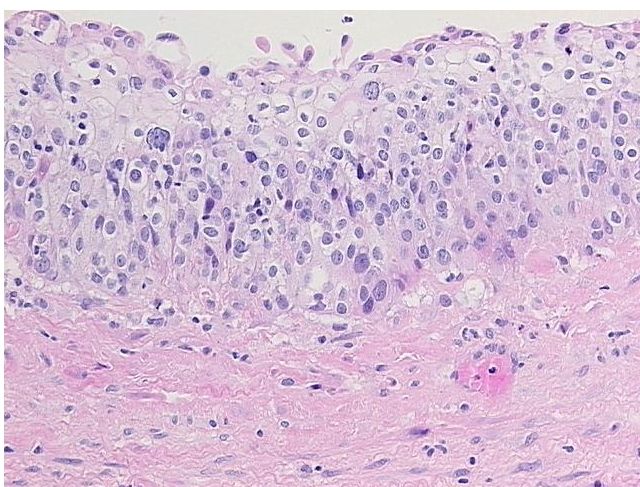


[View online »](#)

| | |
|------------------------------|---|
| Tumor Grade: | Not Reported |
| Minimum Stage Grouping: | IB2 |
| T (Extent of Primary Tumor): | T1b2 |
| N (Lymph node metastasis): | NX |
| M (Distant metastasis): | MX |
| Storage: | Store FFPE tissue sections at +4°C. |
| Stability: | All FFPE tissue sections are stable for 1 year from date of purchase. |

Product images:

4x Image



20x Image