

## Product datasheet for CS707782

### Tissue FFPE Sections, Lung

#### Product data:

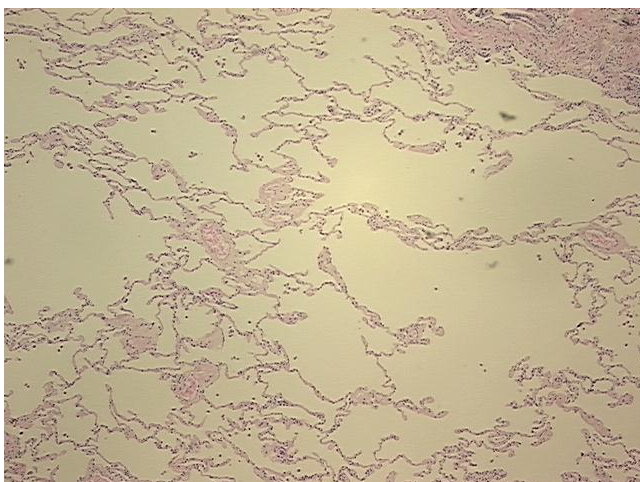
Product Type:	FFPE Sections
Disease State:	Normal
Diagnosis Category:	Normal
Tissue:	Lung
Frozen Sample ID:	PA154772C1
Case ID:	CI0000009749
Tissue of Origin:	Lung
Site of Finding:	Lung
Appearance:	R
Sample Diagnosis (from Pathology Verification):	Within normal limits
Normal:	100%
Lesional:	0%
Tumor:	0%
Tumor Hypo/Acellular Stroma:	0%
Tumor Hypercellular Stroma:	0%
Necrosis:	0%
Pathology Verification notes from H&E review:	Non Tumor Structures: 90% Alveoli, 5% Bronchioles, 5% Fibrovascular septa
CASE Diagnosis (from medical center path report):	Carcinoma of lung, squamous cell
Age:	73
Gender:	Female
Race:	White or Caucasian



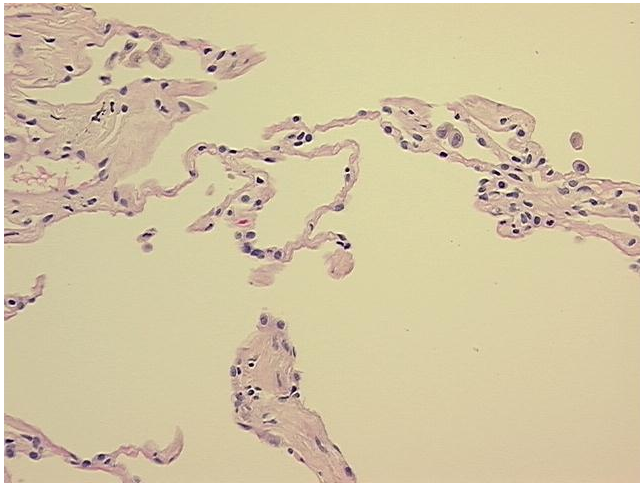
[View online »](#)

<b>Tumor Grade:</b>	AJCC G3: Poorly differentiated
<b>Minimum Stage Grouping:</b>	IIIB
<b>T (Extent of Primary Tumor):</b>	T4
<b>N (Lymph node metastasis):</b>	N0
<b>M (Distant metastasis):</b>	MX
<b>Diagnostic Test Results:</b>	CEA-D14 ~ Carcinoembryonic Antigen - D14,Positive; Cytokeratins (5 and 6) ~ CK5,6 ! by IHC,Positive; HMB45 melanoma antigen ~ GP100 ! by IHC,Negative; Cytokeratin 7 ~ CK7 ! by IHC,Positive; Cytokeratin 20 ~ CK20 ! by IHC,Negative
<b>Storage:</b>	Store FFPE tissue sections at +4°C.
<b>Stability:</b>	All FFPE tissue sections are stable for 1 year from date of purchase.

### Product images:



4x Image



20x Image