

## Product datasheet for **CS707757**

### Tissue FFPE Sections, Lung

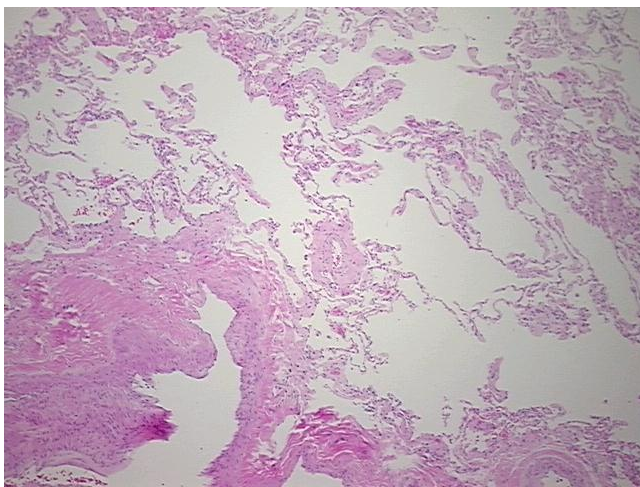
#### Product data:

Product Type:	FFPE Sections
Disease State:	Other Disease
Diagnosis Category:	Chronic Obstructive Pulmonary Disease (COPD)
Tissue:	Lung
Frozen Sample ID:	PA15477B6C
Case ID:	CI0000009727
Tissue of Origin:	Lung
Site of Finding:	Lung
Appearance:	L
Sample Diagnosis (from Pathology Verification):	Emphysema, centrilobular
Normal:	0%
Lesional:	100%
Tumor:	0%
Tumor Hypo/Acellular Stroma:	0%
Tumor Hypercellular Stroma:	0%
Necrosis:	0%
Pathology Verification notes from H&E review:	Non Tumor Structures: 80% Alveoli, 5% Bronchioles, 15% Fibrovascular septa
CASE Diagnosis (from medical center path report):	Adenocarcinoma of lung
Age:	79
Gender:	Male
Race:	White or Caucasian

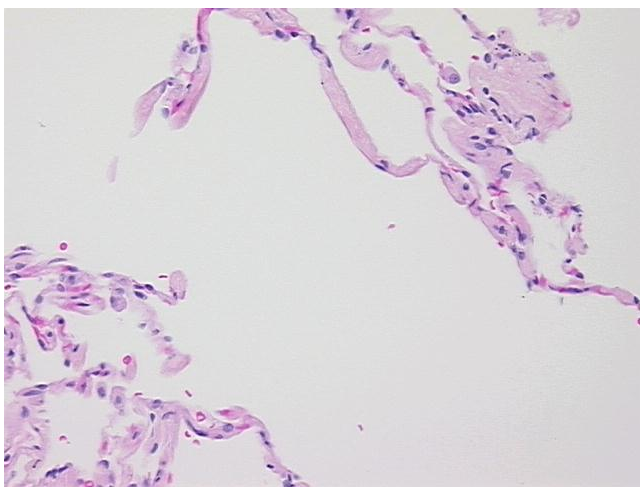


[View online »](#)

Tumor Grade:	AJCC G3: Poorly differentiated
Minimum Stage Grouping:	IA
T (Extent of Primary Tumor):	T1
N (Lymph node metastasis):	N0
M (Distant metastasis):	MX
Storage:	Store FFPE tissue sections at +4°C.
Stability:	All FFPE tissue sections are stable for 1 year from date of purchase.

**Product images:**

4x Image



20x Image