

Product datasheet for **CS707469**

Tissue FFPE Sections, Lung

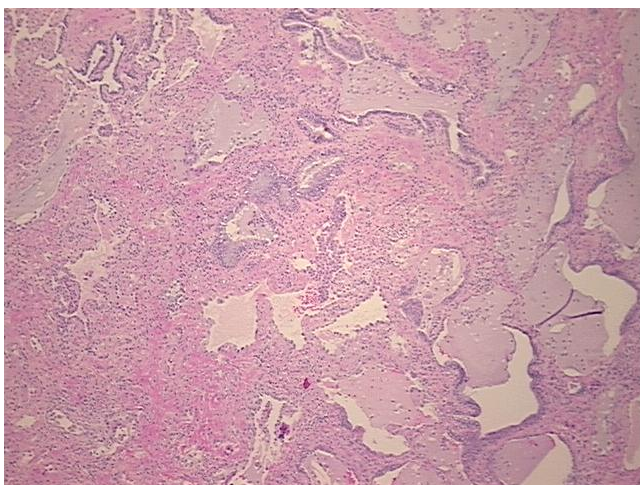
Product data:

| | |
|---|---|
| Product Type: | FFPE Sections |
| Disease State: | Other Disease |
| Diagnosis Category: | Pneumonia |
| Tissue: | Lung |
| Frozen Sample ID: | PA1547771E |
| Case ID: | CI0000009518 |
| Tissue of Origin: | Lung |
| Site of Finding: | Lung |
| Appearance: | L |
| Sample Diagnosis (from Pathology Verification): | Pneumonia, interstitial, nonspecific, fibrosing |
| Normal: | 0% |
| Lesional: | 100% |
| Tumor: | 0% |
| Tumor Hypo/Acellular Stroma: | 0% |
| Tumor Hypercellular Stroma: | 0% |
| Necrosis: | 0% |
| Pathology Verification notes from H&E review: | no normal architecture |
| CASE Diagnosis (from medical center path report): | Carcinoma of lung, small cell |
| Age: | 54 |
| Gender: | Male |
| Race: | White or Caucasian |

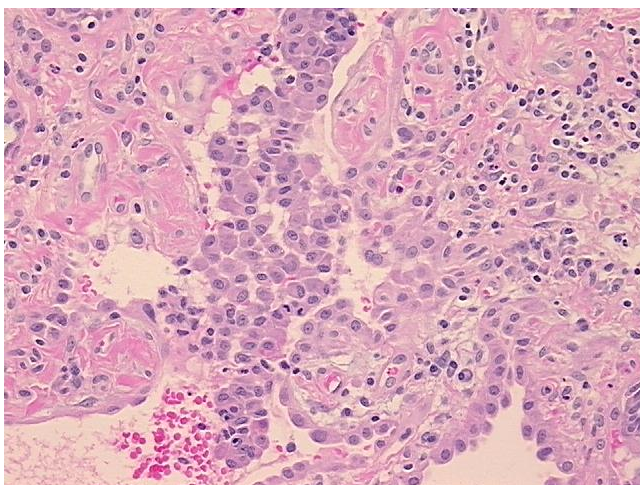


[View online »](#)

| | |
|------------------------------|--|
| Tumor Grade: | Not Reported |
| Minimum Stage Grouping: | IIIA |
| T (Extent of Primary Tumor): | T2 |
| N (Lymph node metastasis): | N2 |
| M (Distant metastasis): | MX |
| Diagnostic Test Results: | Cytokeratin (Pan) ~ Keratin, Pan ! by IHC,Positive; Synaptophysin ~ SYN ! by IHC,Reported as Performed or Reviewed; Chromogranin A ~ Parathyroid secretory protein 1 ! by IHC,Reported as Performed or Reviewed; Thyroid transcription factor 1 ~ TTF1 |
| Storage: | Store FFPE tissue sections at +4°C. |
| Stability: | All FFPE tissue sections are stable for 1 year from date of purchase. |

Product images:

4x Image



20x Image