

## Product datasheet for **CS707468**

### Tissue FFPE Sections, Lung

#### Product data:

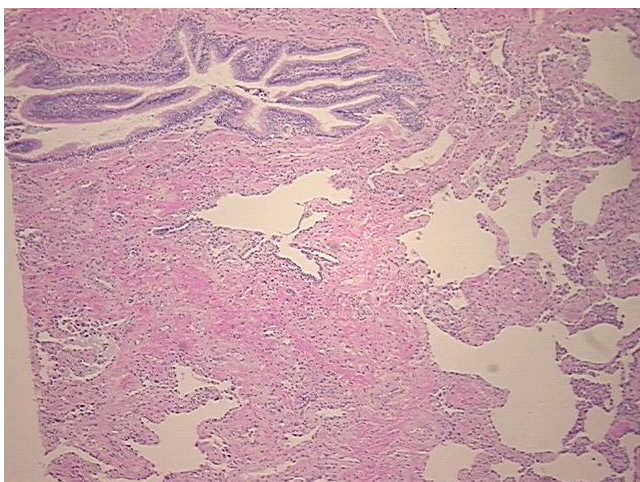
Product Type:	FFPE Sections
Disease State:	Other Disease
Diagnosis Category:	Pneumonia
Tissue:	Lung
Frozen Sample ID:	PA1547771C
Case ID:	CI0000009518
Tissue of Origin:	Lung
Site of Finding:	Lung
Appearance:	L
Sample Diagnosis (from Pathology Verification):	Pneumonia, interstitial, nonspecific, fibrosing
Normal:	0%
Lesional:	100%
Tumor:	0%
Tumor Hypo/Acellular Stroma:	0%
Tumor Hypercellular Stroma:	0%
Necrosis:	0%
Pathology Verification notes from H&E review:	no normal architecture
CASE Diagnosis (from medical center path report):	Carcinoma of lung, small cell
Age:	54
Gender:	Male
Race:	White or Caucasian



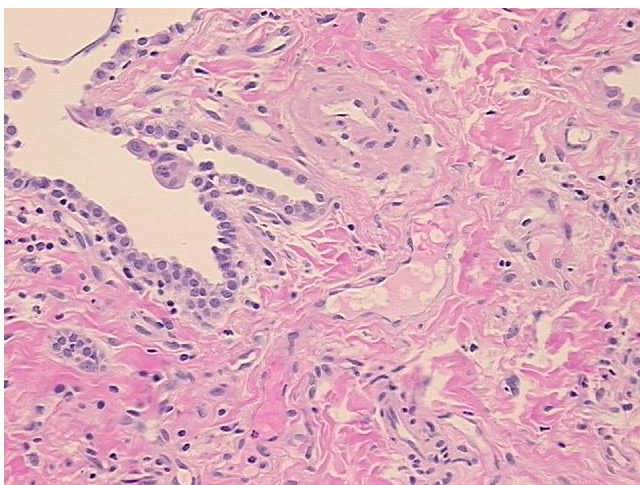
[View online »](#)

Tumor Grade:	Not Reported
Minimum Stage Grouping:	IIIA
T (Extent of Primary Tumor):	T2
N (Lymph node metastasis):	N2
M (Distant metastasis):	MX
Diagnostic Test Results:	Cytokeratin (Pan) ~ Keratin, Pan ! by IHC,Positive; Synaptophysin ~ SYN ! by IHC,Reported as Performed or Reviewed; Chromogranin A ~ Parathyroid secretory protein 1 ! by IHC,Reported as Performed or Reviewed; Thyroid transcription factor 1 ~ TTF1
Storage:	Store FFPE tissue sections at +4°C.
Stability:	All FFPE tissue sections are stable for 1 year from date of purchase.

### Product images:



4x Image



20x Image