

## Product datasheet for **CS707384**

### Tissue FFPE Sections, Lung

#### Product data:

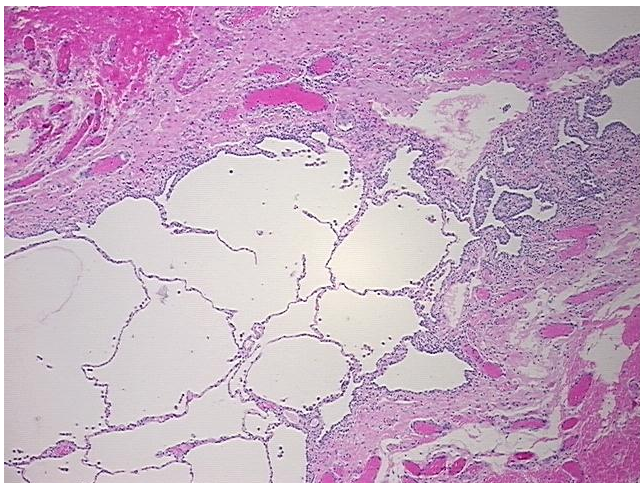
Product Type:	FFPE Sections
Disease State:	Cancer
Diagnosis Category:	Carcinoid/Neuroendocrine Tumors
Tissue:	Lung
Frozen Sample ID:	PA15476F7D
Case ID:	CI0000009458
Tissue of Origin:	Lung
Site of Finding:	Lung
Appearance:	T
Sample Diagnosis (from Pathology Verification):	epithelioid hemangioendothelioma
Normal:	0%
Lesional:	25%
Tumor:	75%
Tumor Hypo/Acellular Stroma:	0%
Tumor Hypercellular Stroma:	0%
Necrosis:	0%
Pathology Verification notes from H&E review:	tumor: epithelioid hemangioendothelioma; lesion: fibrosis
CASE Diagnosis (from medical center path report):	Tumor of lung, carcinoid
Age:	51
Gender:	Female
Race:	White or Caucasian



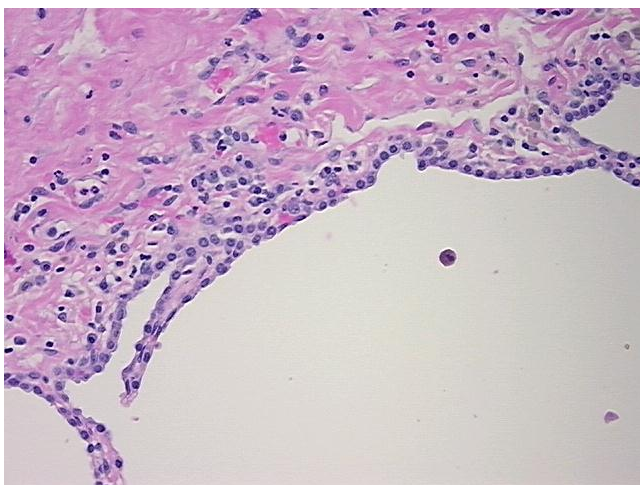
[View online »](#)

Tumor Grade:	Not Reported
Minimum Stage Grouping:	Not Reported
T (Extent of Primary Tumor):	Not Reported
N (Lymph node metastasis):	Not Reported
M (Distant metastasis):	Not Reported
Diagnostic Test Results:	CD227 ~ MUC1 ~ EMA ~ CA15-3 ! by IHC,Negative; Congo red,Negative; Cytokeratin (Pan) ~ Keratin, Pan ! by IHC,Negative; Factor VIII ! by IHC,Positive, focal; CD31 ~ PECAM1 ! by IHC,Positive
Storage:	Store FFPE tissue sections at +4°C.
Stability:	All FFPE tissue sections are stable for 1 year from date of purchase.

### Product images:



4x Image



20x Image