

## Product datasheet for **CS707304**

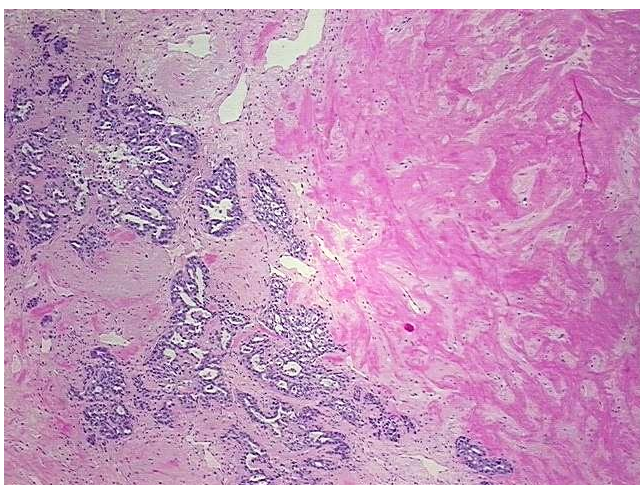
### Tissue FFPE Sections, Breast

#### Product data:

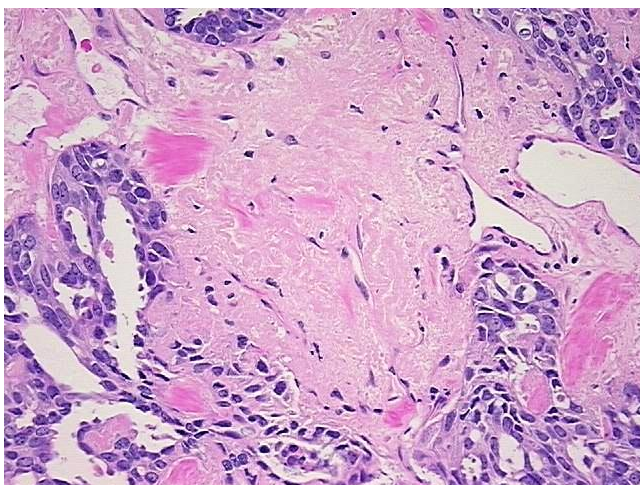
Product Type:	FFPE Sections
Disease State:	Cancer
Diagnosis Category:	Breast Cancer
Tissue:	Breast
Frozen Sample ID:	PA000063C8
Case ID:	CI0000009231
Tissue of Origin:	Breast
Site of Finding:	Breast
Appearance:	Tumor
Sample Diagnosis (from Pathology Verification):	Adenocarcinoma of breast, ductal
Normal:	0%
Lesional:	0%
Tumor:	20%
Tumor Hypo/Acellular Stroma:	50%
Tumor Hypercellular Stroma:	10%
Necrosis:	20%
Pathology Verification notes from H&E review:	acellular stroma: myxoid
CASE Diagnosis (from medical center path report):	Adenocarcinoma of breast, ductal
Age:	71
Gender:	Female
Tumor Grade:	Nottingham G3: 8-9 points High combined grade (unfavorable)


[View online »](#)

Minimum Stage Grouping:	IIIB
T (Extent of Primary Tumor):	pT4
N (Lymph node metastasis):	pN1a
M (Distant metastasis):	pMX
Storage:	Store FFPE tissue sections at +4°C.
Stability:	All FFPE tissue sections are stable for 1 year from date of purchase.

**Product images:**


4x Image



20x Image