

Product datasheet for **CS707297**

Tissue FFPE Sections, Colon: left

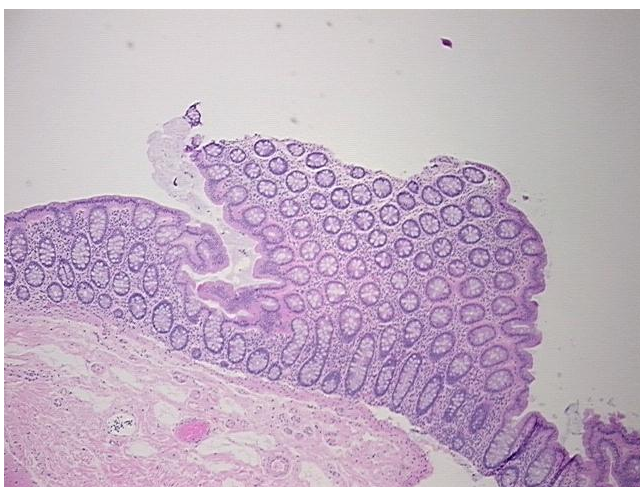
Product data:

| | |
|---|---------------------------------------|
| Product Type: | FFPE Sections |
| Disease State: | Normal |
| Diagnosis Category: | Normal |
| Tissue: | Colon |
| Frozen Sample ID: | PA000063CE |
| Case ID: | CI0000009210 |
| Tissue of Origin: | Colon: left |
| Site of Finding: | Colon: left |
| Appearance: | R |
| Sample Diagnosis (from Pathology Verification): | Within normal limits |
| Normal: | 100% |
| Lesional: | 0% |
| Tumor: | 0% |
| Tumor Hypo/Acellular Stroma: | 0% |
| Tumor Hypercellular Stroma: | 0% |
| Necrosis: | 0% |
| Pathology Verification notes from H&E review: | 15% mucosa, 10% submucosa, 75% muscle |
| CASE Diagnosis (from medical center path report): | Adenocarcinoma of colon |
| Age: | 70 |
| Gender: | Male |
| Race: | Black or African American |

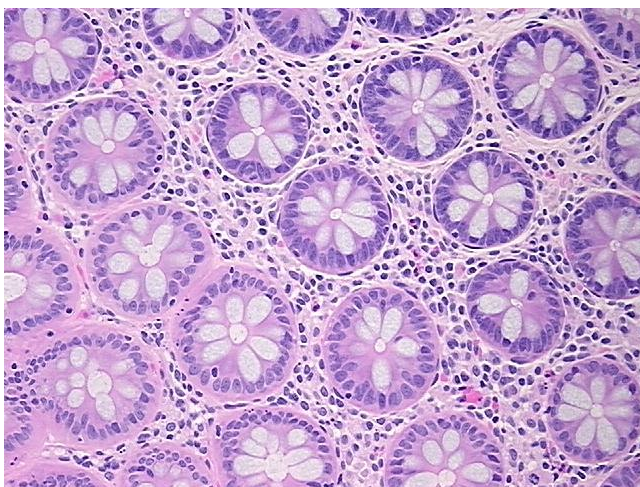


[View online »](#)

| | |
|------------------------------|---|
| Tumor Grade: | AJCC G2: Moderately differentiated |
| Minimum Stage Grouping: | IV |
| T (Extent of Primary Tumor): | T3 |
| N (Lymph node metastasis): | N1 |
| M (Distant metastasis): | M1 |
| Storage: | Store FFPE tissue sections at +4°C. |
| Stability: | All FFPE tissue sections are stable for 1 year from date of purchase. |

Product images:

4x Image



20x Image