

Product datasheet for **CS707272**

Tissue FFPE Sections, Neural tissue

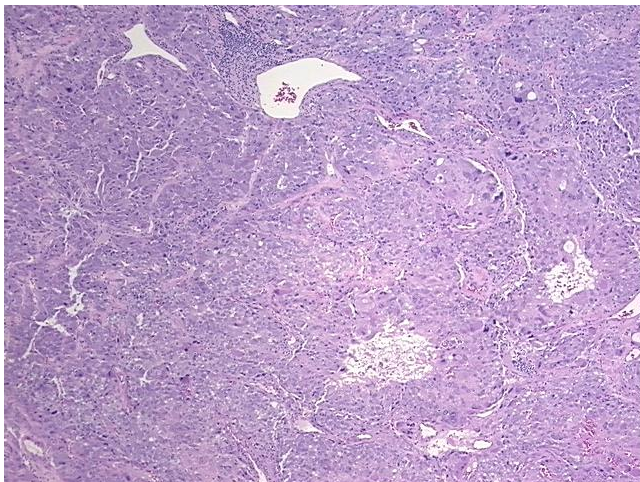
Product data:

Product Type:	FFPE Sections
Disease State:	Cancer
Diagnosis Category:	Carcinoid/Neuroendocrine Tumors
Tissue:	Nerve
Frozen Sample ID:	PA15477D37
Case ID:	CI0000009156
Tissue of Origin:	Neural tissue
Site of Finding:	Adrenal gland
Appearance:	T
Sample Diagnosis (from Pathology Verification):	Pheochromocytoma, composite
Normal:	0%
Lesional:	0%
Tumor:	90%
Tumor Hypo/Acellular Stroma:	5%
Tumor Hypercellular Stroma:	5%
Necrosis:	0%
Pathology Verification notes from H&E review:	Tumor Stroma (Cellular): Inflammatory cells; Tumor Stroma (Hypo/Acellular): Fibrosis; Inflammation: Mild Lymphoplasmacytic infiltrate; Other Features/Comments: Tumor: mixed pheochromocytoma and ganglioneuroma
CASE Diagnosis (from medical center path report):	Pheochromocytoma, composite
Age:	49
Gender:	Female

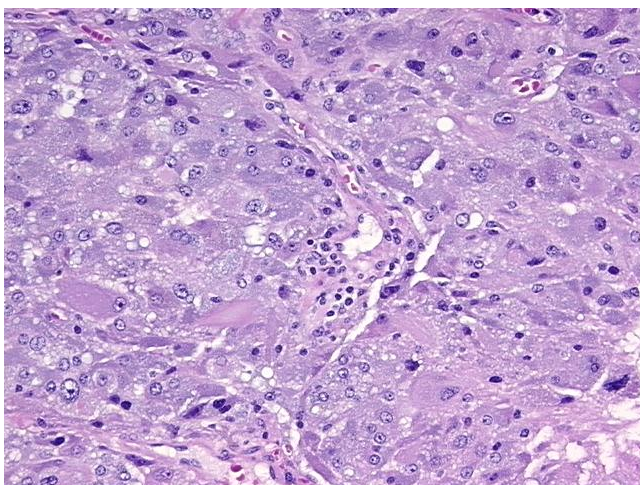


[View online »](#)

Race:	White or Caucasian
Tumor Grade:	Not Reported
Minimum Stage Grouping:	Not Reported
T (Extent of Primary Tumor):	Not Reported
N (Lymph node metastasis):	Not Reported
M (Distant metastasis):	Not Reported
Storage:	Store FFPE tissue sections at +4°C.
Stability:	All FFPE tissue sections are stable for 1 year from date of purchase.

Product images:

4x Image



20x Image