

## Product datasheet for **CS706874**

### Tissue FFPE Sections, Endometrium

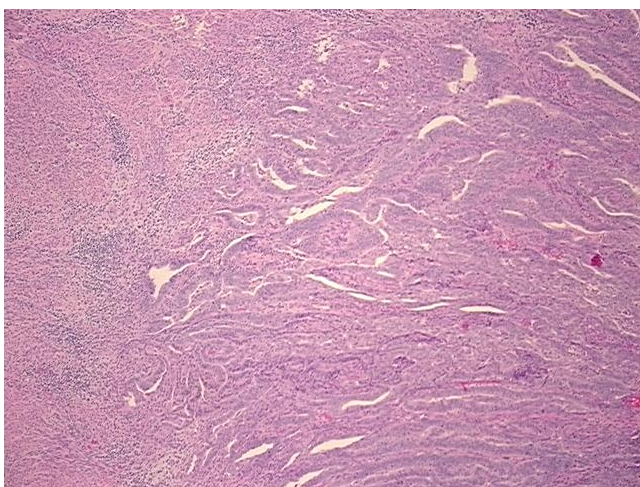
#### Product data:

Product Type:	FFPE Sections
Disease State:	Cancer
Diagnosis Category:	Endometrial Cancer
Tissue:	Endometrium
Frozen Sample ID:	PA0F3351DF
Case ID:	CI0000008915
Tissue of Origin:	Endometrium
Site of Finding:	Uterus
Appearance:	T
Sample Diagnosis (from Pathology Verification):	Adenocarcinoma of endometrium, endometrioid, squamous features, focal
Normal:	15%
Lesional:	0%
Tumor:	85%
Tumor Hypo/Acellular Stroma:	0%
Tumor Hypercellular Stroma:	0%
Necrosis:	0%
Pathology Verification notes from H&E review:	normal: 100% myometrium
CASE Diagnosis (from medical center path report):	Adenocarcinoma of endometrium, endometrioid, squamous features, focal
Age:	55
Gender:	Female
Race:	White or Caucasian

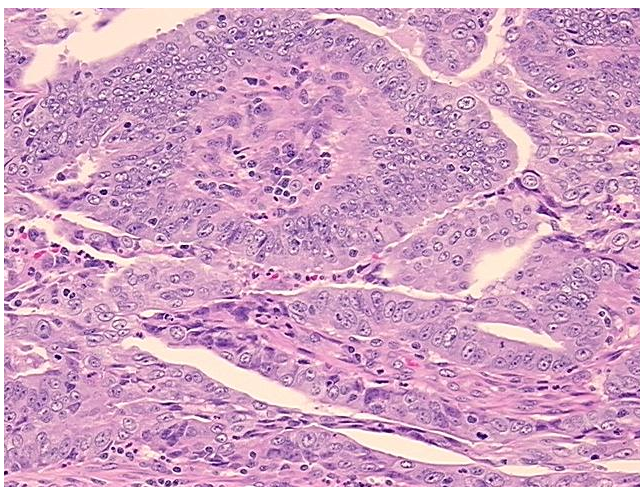


[View online »](#)

Tumor Grade:	FIGO G3: Poorly differentiated
Minimum Stage Grouping:	IC
T (Extent of Primary Tumor):	T1c
N (Lymph node metastasis):	N0
M (Distant metastasis):	MX
Storage:	Store FFPE tissue sections at +4°C.
Stability:	All FFPE tissue sections are stable for 1 year from date of purchase.

**Product images:**

4x Image



20x Image