

## Product datasheet for **CS706838**

### Tissue FFPE Sections, Epiglottis

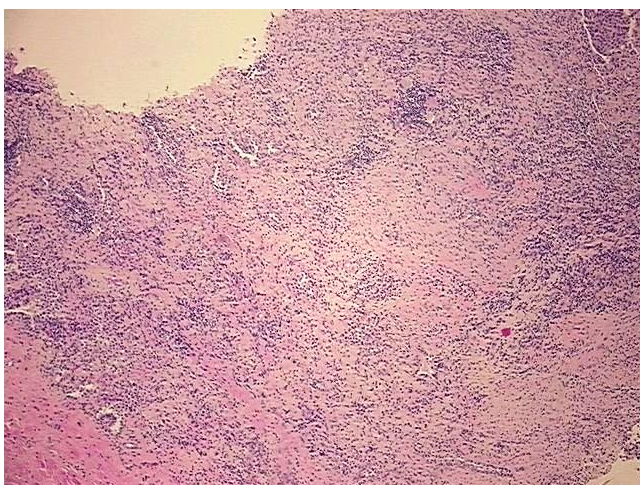
#### Product data:

Product Type:	FFPE Sections
Disease State:	Cancer
Diagnosis Category:	Head and Neck Cancer
Tissue:	Epiglottis
Frozen Sample ID:	PA154773D7
Case ID:	CI0000008905
Tissue of Origin:	Epiglottis
Site of Finding:	Lung
Appearance:	Tumor
Sample Diagnosis (from Pathology Verification):	Carcinoma of epiglottis, squamous cell, metastatic
Normal:	5%
Lesional:	0%
Tumor:	35%
Tumor Hypo/Acellular Stroma:	20%
Tumor Hypercellular Stroma:	40%
Necrosis:	0%
Pathology Verification notes from H&E review:	hypercellular tumor stroma: desmoplasia; hypocellular tumor stroma: dense fibrosis
CASE Diagnosis (from medical center path report):	Carcinoma of epiglottis, squamous cell, metastatic
Age:	76
Gender:	Female
Tumor Grade:	AJCC G2: Moderately differentiated

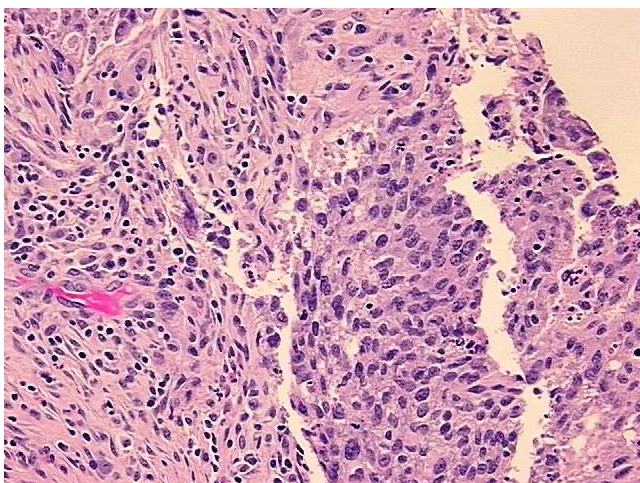


[View online »](#)

Minimum Stage Grouping:	IV
T (Extent of Primary Tumor):	pTX
N (Lymph node metastasis):	pNX
M (Distant metastasis):	pM1
Storage:	Store FFPE tissue sections at +4°C.
Stability:	All FFPE tissue sections are stable for 1 year from date of purchase.

**Product images:**

4x Image



20x Image