

## Product datasheet for **CS706663**

### Tissue FFPE Sections, Endometrium

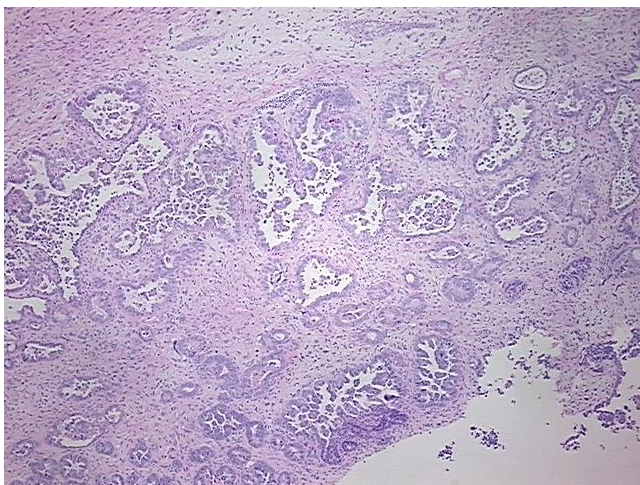
#### Product data:

|   |                                |
|---|--------------------------------|
| Product Type:                                     | FFPE Sections                  |
| Disease State:                                    | Cancer                         |
| Diagnosis Category:                               | Sarcoma                        |
| Tissue:   | Endometrium                    |
| Frozen Sample ID:                                 | PA154776FD                     |
| Case ID:  | CI0000008780                   |
| Tissue of Origin:                                 | Endometrium                    |
| Site of Finding:                                  | Endometrium                    |
| Appearance:                                       | T                              |
| Sample Diagnosis (from Pathology Verification):   | Carcinosarcoma of endometrium  |
| Normal:   | 0%                             |
| Lesional:   | 0%                             |
| Tumor:  | 90%                            |
| Tumor Hypo/Acellular Stroma:                      | 0%                             |
| Tumor Hypercellular Stroma:                       | 10%                            |
| Necrosis:   | 0%                             |
| CASE Diagnosis (from medical center path report): | Carcinosarcoma of endometrium  |
| Age:  | 70                             |
| Gender:   | Female                         |
| Race:   | White or Caucasian             |
| Tumor Grade:                                      | FIGO G3: Poorly differentiated |

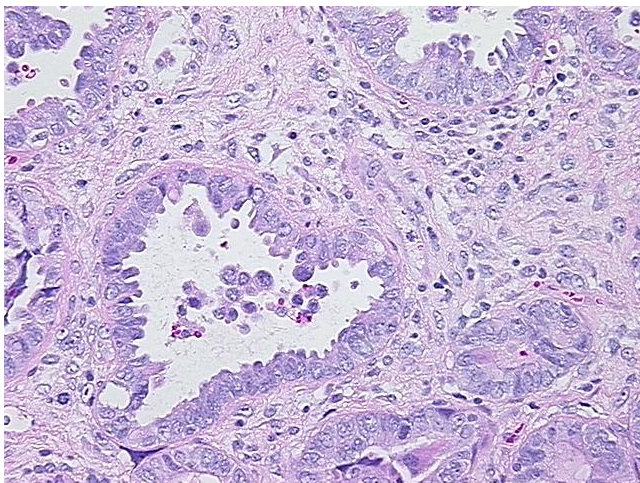


[View online »](#)

|                              |   |
|------------------------------|---|
| Minimum Stage Grouping:      | IB  |
| T (Extent of Primary Tumor): | T1b   |
| N (Lymph node metastasis):   | N0  |
| M (Distant metastasis):      | MX  |
| Storage:                     | Store FFPE tissue sections at +4°C.                                   |
| Stability:                   | All FFPE tissue sections are stable for 1 year from date of purchase. |

**Product images:**

4x Image



20x Image