

Product datasheet for **CS706500**

Tissue FFPE Sections, Lung: left lower lobe

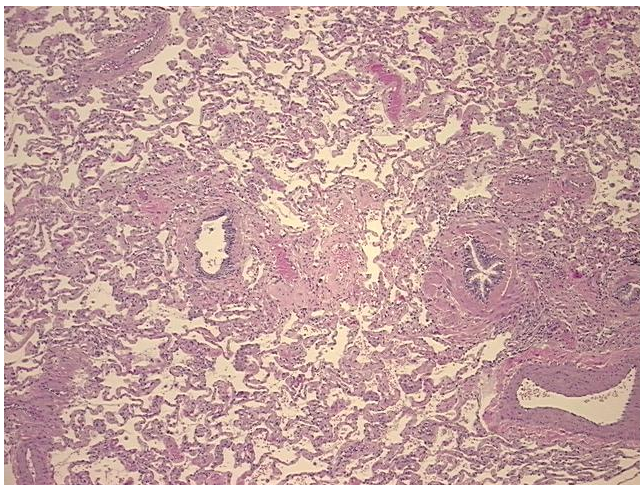
Product data:

Product Type:	FFPE Sections
Disease State:	Normal
Diagnosis Category:	Normal
Tissue:	Lung
Frozen Sample ID:	PA0F334835
Case ID:	CI0000008641
Tissue of Origin:	Lung: left lower lobe
Site of Finding:	Lung: left lower lobe
Appearance:	R
Sample Diagnosis (from Pathology Verification):	Within normal limits
Normal:	100%
Lesional:	0%
Tumor:	0%
Tumor Hypo/Acellular Stroma:	0%
Tumor Hypercellular Stroma:	0%
Necrosis:	0%
Pathology Verification notes from H&E review:	Non Tumor Structures: 35% Alveoli, 5% Bronchioles, 60% Fibrovascular septa
CASE Diagnosis (from medical center path report):	Carcinoma of lung, large cell, neuroendocrine
Age:	49
Gender:	Female
Race:	White or Caucasian

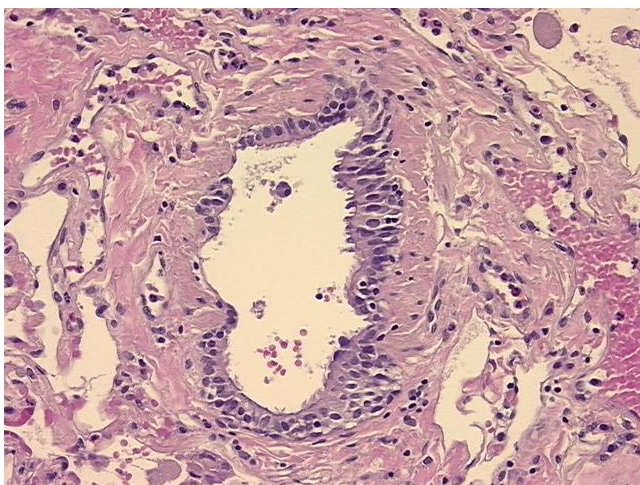


[View online »](#)

Tumor Grade:	Not Reported
Minimum Stage Grouping:	IB
T (Extent of Primary Tumor):	T2
N (Lymph node metastasis):	N0
M (Distant metastasis):	MX
Diagnostic Test Results:	Cytokeratin (Pan) ~ Keratin, Pan ! by IHC,Positive; Synaptophysin ~ SYN ! by IHC,Positive; Chromogranin A ~ Parathyroid secretory protein 1 ! by IHC,Positive
Storage:	Store FFPE tissue sections at +4°C.
Stability:	All FFPE tissue sections are stable for 1 year from date of purchase.

Product images:

4x Image



20x Image