

Product datasheet for **CS706470**

Tissue FFPE Sections, Lung

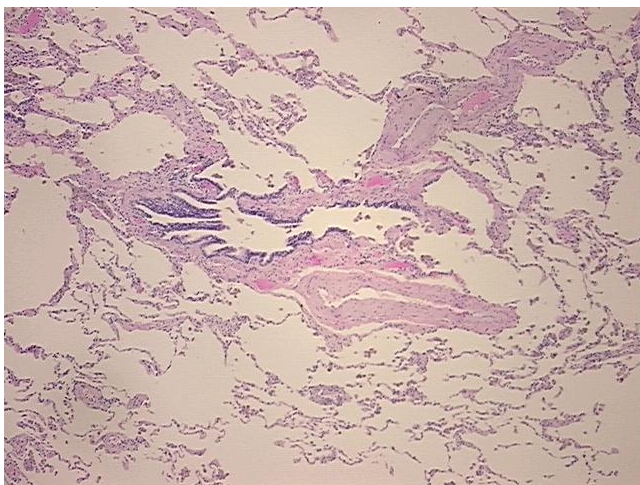
Product data:

| | |
|---|---|
| Product Type: | FFPE Sections |
| Disease State: | Other Disease |
| Diagnosis Category: | Chronic Obstructive Pulmonary Disease (COPD) |
| Tissue: | Lung |
| Frozen Sample ID: | PA154773DA |
| Case ID: | CI0000008619 |
| Tissue of Origin: | Lung |
| Site of Finding: | Lung |
| Appearance: | L |
| Sample Diagnosis (from Pathology Verification): | Emphysema, centrilobular |
| Normal: | 0% |
| Lesional: | 100% |
| Tumor: | 0% |
| Tumor Hypo/Acellular Stroma: | 0% |
| Tumor Hypercellular Stroma: | 0% |
| Necrosis: | 0% |
| Pathology Verification notes from H&E review: | 60% alveoli, 20% bronchioles, 20% fibrovascular septa |
| CASE Diagnosis (from medical center path report): | Adenocarcinoma of lung |
| Age: | 71 |
| Gender: | Male |
| Race: | White or Caucasian |

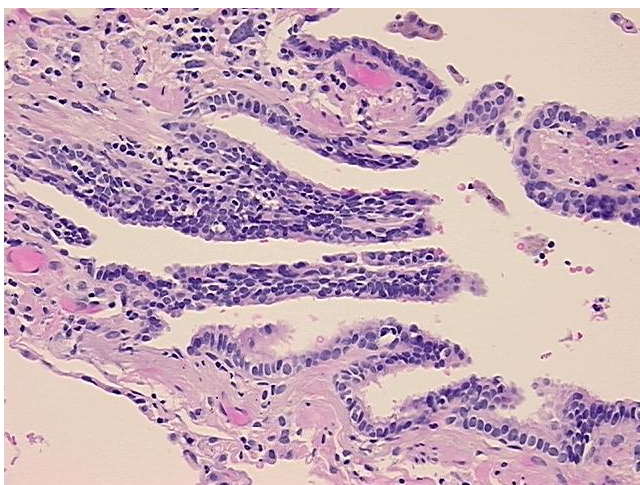


[View online »](#)

| | |
|------------------------------|---|
| Tumor Grade: | AJCC G2: Moderately differentiated |
| Minimum Stage Grouping: | IA |
| T (Extent of Primary Tumor): | T1 |
| N (Lymph node metastasis): | N0 |
| M (Distant metastasis): | MX |
| Storage: | Store FFPE tissue sections at +4°C. |
| Stability: | All FFPE tissue sections are stable for 1 year from date of purchase. |

Product images:

4x Image



20x Image