

## Product datasheet for **CS706445**

### Tissue FFPE Sections, Lung: left lower lobe

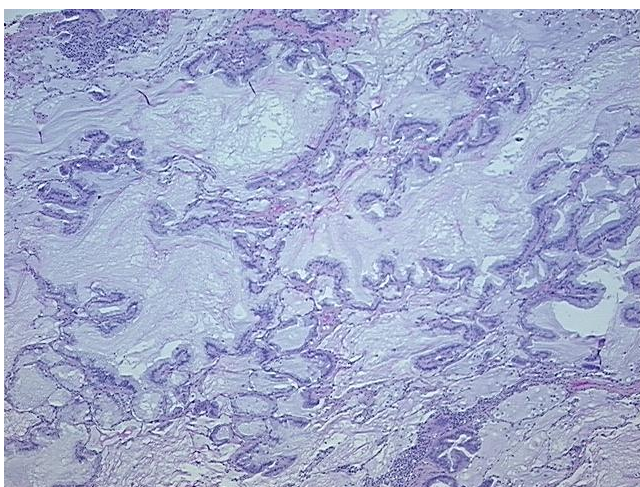
#### Product data:

Product Type:	FFPE Sections
Disease State:	Cancer
Diagnosis Category:	Lung Cancer
Tissue:	Lung
Frozen Sample ID:	PA00006690
Case ID:	CI0000008606
Tissue of Origin:	Lung: left lower lobe
Site of Finding:	Lung
Appearance:	T
Sample Diagnosis (from Pathology Verification):	Adenocarcinoma of lung, bronchioloalveolar, mucinous
Normal:	10%
Lesional:	0%
Tumor:	20%
Tumor Hypo/Acellular Stroma:	70%
Tumor Hypercellular Stroma:	0%
Necrosis:	0%
Pathology Verification notes from H&E review:	Tumor Stroma (Hypo/Acellular): Mucin, Fibrosis
CASE Diagnosis (from medical center path report):	Adenocarcinoma of lung, bronchioloalveolar, mucinous
Age:	73
Gender:	Female
Race:	White or Caucasian

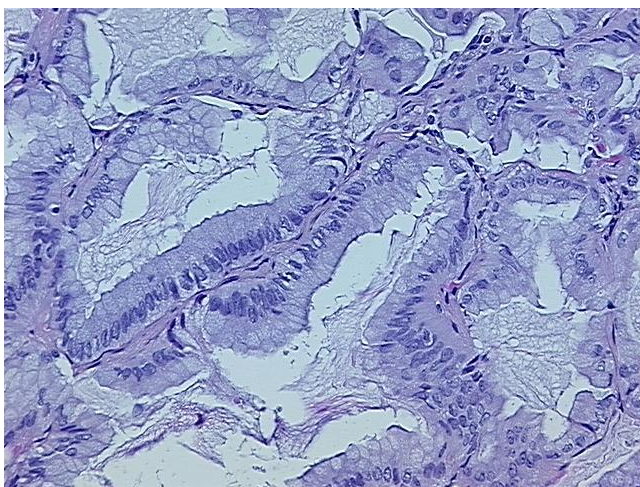


[View online »](#)

Tumor Grade:	AJCC G1: Well differentiated
Minimum Stage Grouping:	IB
T (Extent of Primary Tumor):	T2
N (Lymph node metastasis):	N0
M (Distant metastasis):	MX
Storage:	Store FFPE tissue sections at +4°C.
Stability:	All FFPE tissue sections are stable for 1 year from date of purchase.

**Product images:**

4x Image



20x Image