

Product datasheet for **CS706394**

Tissue FFPE Sections, Pleura

Product data:

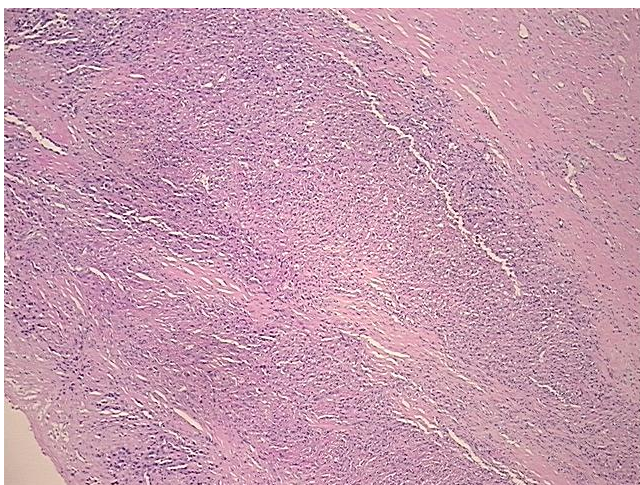
Product Type:	FFPE Sections
Disease State:	Cancer
Diagnosis Category:	Mesothelioma
Tissue:	Lung
Frozen Sample ID:	PA15477DD7
Case ID:	CI0000008573
Tissue of Origin:	Pleura
Site of Finding:	Pleura
Appearance:	T
Sample Diagnosis (from Pathology Verification):	Mesothelioma of pleura, mixed
Normal:	15%
Lesional:	0%
Tumor:	20%
Tumor Hypo/Acellular Stroma:	60%
Tumor Hypercellular Stroma:	5%
Necrosis:	0%
Pathology Verification notes from H&E review:	Tumor Stroma (Cellular): Desmoplastic reaction; Tumor Stroma (Hypo/Acellular): Fibrosis, Myxoid
CASE Diagnosis (from medical center path report):	Mesothelioma of pleura, mixed
Age:	71
Gender:	Male
Race:	White or Caucasian



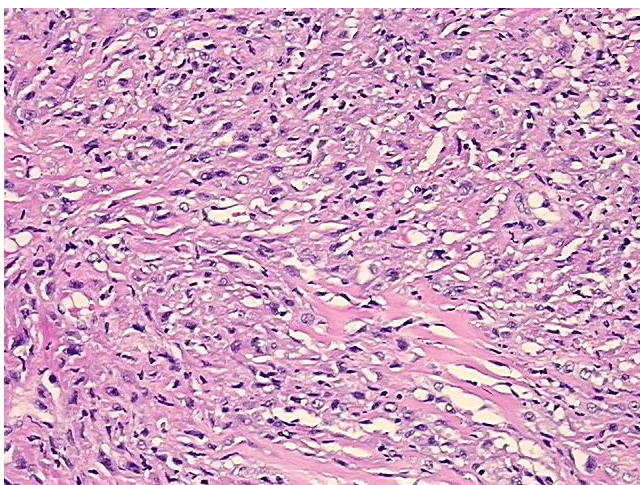
[View online »](#)

Tumor Grade:	Not Reported
Minimum Stage Grouping:	IV
T (Extent of Primary Tumor):	T4
N (Lymph node metastasis):	NX
M (Distant metastasis):	MX
Diagnostic Test Results:	Cytokeratin (Pan) ~ Keratin, Pan ! by IHC,Positive; Epithelial specific antigen ~ BerEP4 ~ MOC31 ! by IHC,Positive, focal; CD66e ~ CEACAM5 ! by IHC,Positive, focal; CD15 ~ Lewis X ~ Leu M1 ! by IHC,Negative; Calretinin,Positive; Thyroid transc
Storage:	Store FFPE tissue sections at +4°C.
Stability:	All FFPE tissue sections are stable for 1 year from date of purchase.

Product images:



4x Image



20x Image