

## Product datasheet for **CS706320**

### Tissue FFPE Sections, Endometriotic tissue

#### Product data:

Product Type:	FFPE Sections
Disease State:	Other Disease
Diagnosis Category:	Endometriosis
Tissue:	Endometriotic tissue
Frozen Sample ID:	PA0F3351AA
Case ID:	CI0000008510
Tissue of Origin:	Endometriotic tissue
Site of Finding:	Ovary
Appearance:	L
Sample Diagnosis (from Pathology Verification):	Endometriosis
Normal:	90%
Lesional:	10%
Tumor:	0%
Tumor Hypo/Acellular Stroma:	0%
Tumor Hypercellular Stroma:	0%
Necrosis:	0%
Pathology Verification notes from H&E review:	lesion: 0% endometrial glands, 100% fibrous stroma containing hemosiderin laden macrophages and fibrin; normal ovary: 80% ovarian stroma, 20% hilar vessels with Graafian follicles present
CASE Diagnosis (from medical center path report):	Endometriosis
Age:	42
Gender:	Female



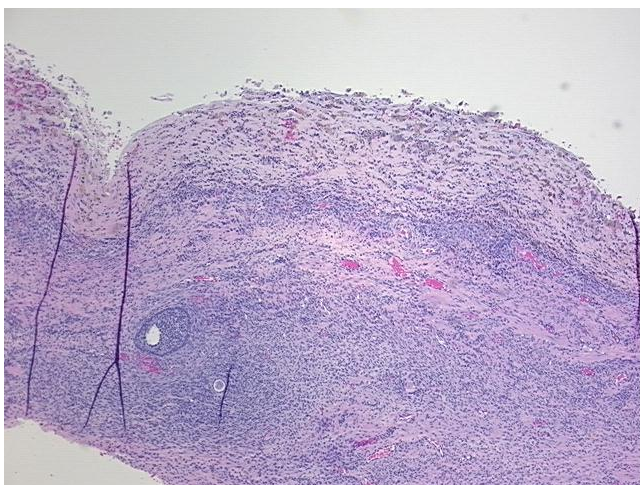
[View online »](#)

Race: White or Caucasian

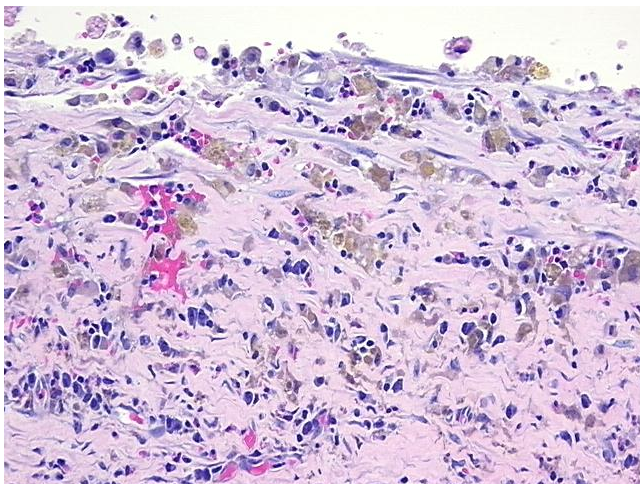
Storage: Store FFPE tissue sections at +4°C.

Stability: All FFPE tissue sections are stable for 1 year from date of purchase.

**Product images:**



4x Image



20x Image