

Product datasheet for CS706319

Tissue FFPE Sections, Endometriotic tissue

Product data:

Product Type:	FFPE Sections
Disease State:	Other Disease
Diagnosis Category:	Endometriosis
Tissue:	Endometriotic tissue
Frozen Sample ID:	PA0F3351A9
Case ID:	CI0000008510
Tissue of Origin:	Endometriotic tissue
Site of Finding:	Ovary
Appearance:	L
Sample Diagnosis (from Pathology Verification):	Endometriosis
Normal:	95%
Lesional:	5%
Tumor:	0%
Tumor Hypo/Acellular Stroma:	0%
Tumor Hypercellular Stroma:	0%
Necrosis:	0%
Pathology Verification notes from H&E review:	lesion: 40% endometrial glands, 60% endometrial stroma containing hemosiderin laden macrophages; normal ovary: 80% ovarian stroma, 20% hilar vessels; Graafian follicles present
CASE Diagnosis (from medical center path report):	Endometriosis
Age:	42
Gender:	Female
Race:	White or Caucasian

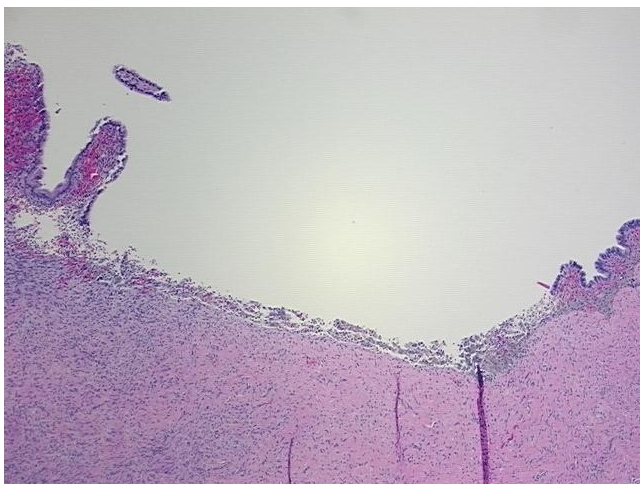


[View online »](#)

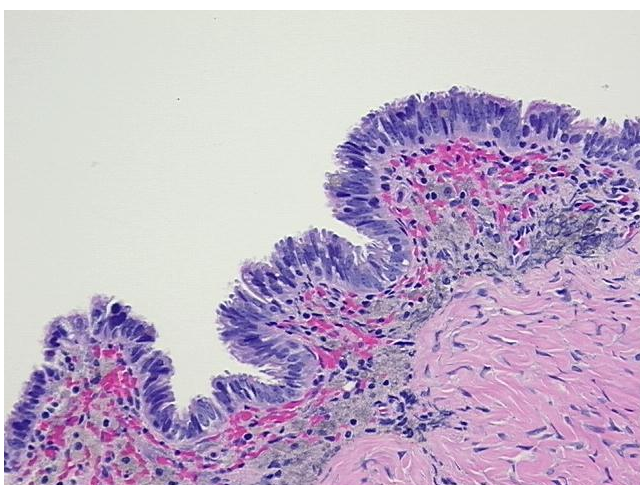
Storage: Store FFPE tissue sections at +4°C.

Stability: All FFPE tissue sections are stable for 1 year from date of purchase.

Product images:



4x Image



20x Image