

Product datasheet for **CS706259**

Tissue FFPE Sections, Endometriotic tissue

Product data:

Product Type:	FFPE Sections
Disease State:	Other Disease
Diagnosis Category:	Endometriosis
Tissue:	Endometriotic tissue
Frozen Sample ID:	PA00005E40
Case ID:	CI0000008486
Tissue of Origin:	Endometriotic tissue
Site of Finding:	Ovary: left
Appearance:	L
Sample Diagnosis (from Pathology Verification):	Endometriosis
Normal:	65%
Lesional:	35%
Tumor:	0%
Tumor Hypo/Acellular Stroma:	0%
Tumor Hypercellular Stroma:	0%
Necrosis:	0%
Pathology Verification notes from H&E review:	normal: 90% ovarian stroma, 10% hilar vessels; lesion: 70% stroma with macrophages, 30% glands
CASE Diagnosis (from medical center path report):	Endometriosis
Age:	35
Gender:	Female
Race:	White or Caucasian

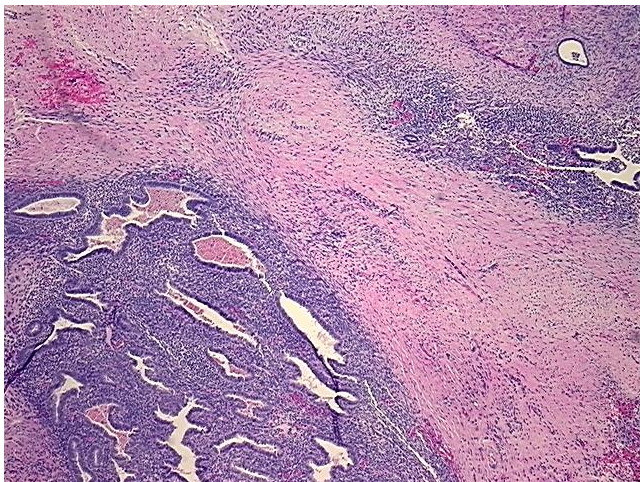


[View online »](#)

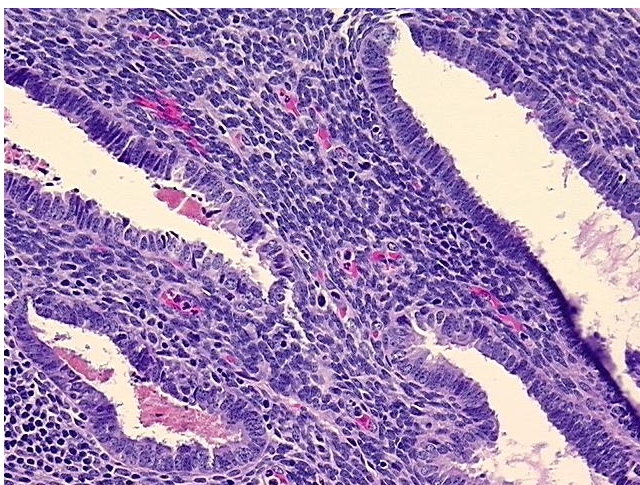
Storage: Store FFPE tissue sections at +4°C.

Stability: All FFPE tissue sections are stable for 1 year from date of purchase.

Product images:



4x Image



20x Image