

Product datasheet for **CS706067**

Tissue FFPE Sections, Colon

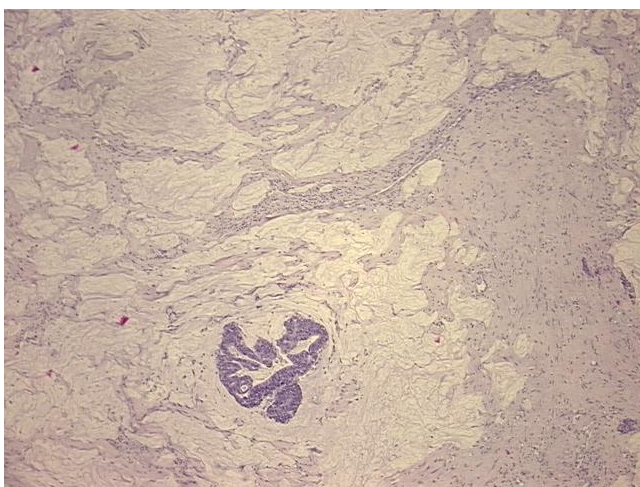
Product data:

Product Type:	FFPE Sections
Disease State:	Cancer
Diagnosis Category:	Colorectal Cancer
Tissue:	Colon
Frozen Sample ID:	PA0000693C
Case ID:	CI0000008341
Tissue of Origin:	Colon
Site of Finding:	Liver
Appearance:	T
Sample Diagnosis (from Pathology Verification):	Adenocarcinoma of colon, mucinous, metastatic
Normal:	0%
Lesional:	0%
Tumor:	10%
Tumor Hypo/Acellular Stroma:	80%
Tumor Hypercellular Stroma:	10%
Necrosis:	0%
Pathology Verification notes from H&E review:	Tumor Stroma (Hypo/Acellular): Mucin
CASE Diagnosis (from medical center path report):	Adenocarcinoma of colon, metastatic
Age:	67
Gender:	Male
Race:	White or Caucasian

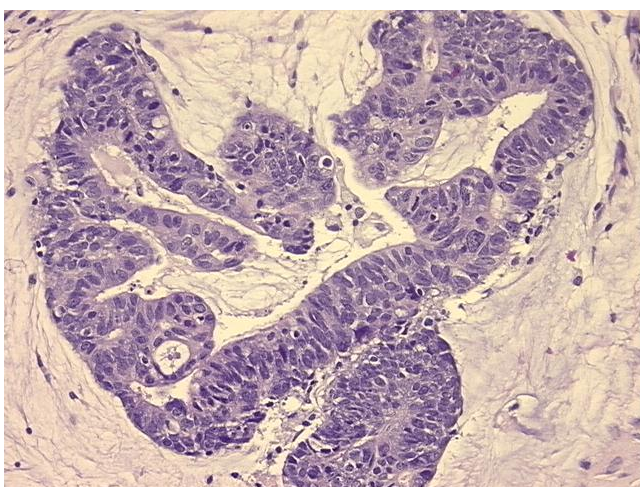


[View online »](#)

Tumor Grade:	Not Reported
Minimum Stage Grouping:	IV
T (Extent of Primary Tumor):	T2
N (Lymph node metastasis):	NX
M (Distant metastasis):	M1
Storage:	Store FFPE tissue sections at +4°C.
Stability:	All FFPE tissue sections are stable for 1 year from date of purchase.

Product images:

4x Image



20x Image