

Product datasheet for **CS705783**

Tissue FFPE Sections, Endometrium

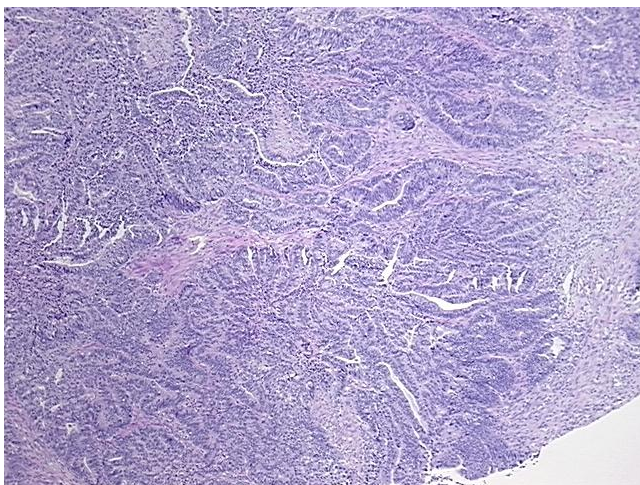
Product data:

Product Type:	FFPE Sections
Disease State:	Cancer
Diagnosis Category:	Endometrial Cancer
Tissue:	Endometrium
Frozen Sample ID:	PA0000678D
Case ID:	CI0000008122
Tissue of Origin:	Endometrium
Site of Finding:	Uterus
Appearance:	T
Sample Diagnosis (from Pathology Verification):	Adenocarcinoma of endometrium, endometrioid
Normal:	20%
Lesional:	0%
Tumor:	60%
Tumor Hypo/Acellular Stroma:	0%
Tumor Hypercellular Stroma:	20%
Necrosis:	0%
CASE Diagnosis (from medical center path report):	Adenocarcinoma of endometrium, endometrioid
Age:	54
Gender:	Female
Race:	White or Caucasian
Tumor Grade:	FIGO G2: Moderately differentiated

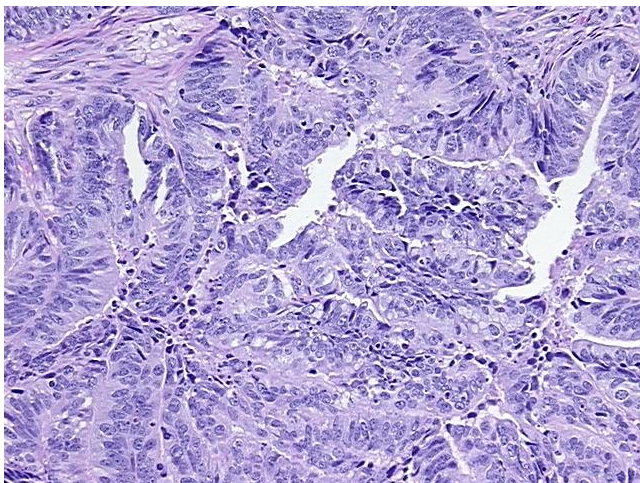


[View online »](#)

Minimum Stage Grouping:	II
T (Extent of Primary Tumor):	T2
N (Lymph node metastasis):	N0
M (Distant metastasis):	MX
Storage:	Store FFPE tissue sections at +4°C.
Stability:	All FFPE tissue sections are stable for 1 year from date of purchase.

Product images:

4x Image



20x Image