

Product datasheet for **CS705578**

Tissue FFPE Sections, Lung

Product data:

Product Type:	FFPE Sections
Disease State:	Other Disease
Diagnosis Category:	Fibrosis
Tissue:	Lung
Frozen Sample ID:	PA00005696
Case ID:	CI0000007993
Tissue of Origin:	Lung
Site of Finding:	Lung
Appearance:	L
Sample Diagnosis (from Pathology Verification):	Fibrosis
Normal:	0%
Lesional:	100%
Tumor:	0%
Tumor Hypo/Acellular Stroma:	0%
Tumor Hypercellular Stroma:	0%
Necrosis:	0%
Pathology Verification notes from H&E review:	no normal architecture
CASE Diagnosis (from medical center path report):	Lymphoid hyperplasia of lung
Age:	49
Gender:	Male
Race:	Black or African American



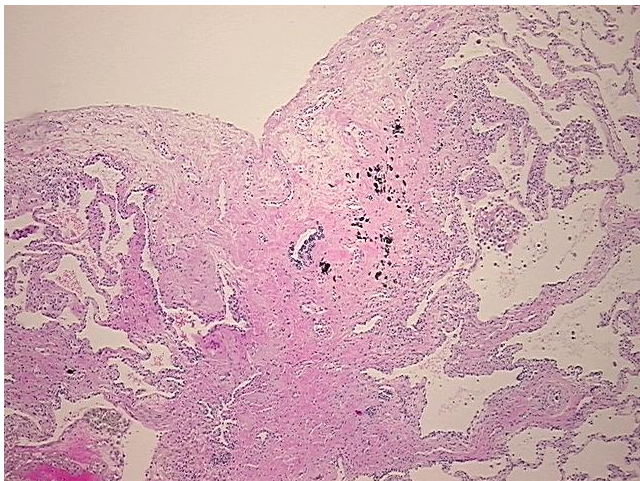
[View online »](#)

Diagnostic Test Results: CD3 ~ Leu4 ~ UCHT1 ! by FC,Positive; Kappa light chain ! by FC,Positive, polyclonal; Lambda light chain ! by FC,Positive, polyclonal; CD8 ~ Leu2a ~ T8 ! by IHC,Positive; CD5 ~ Leu1 ! by IHC,Positive; CD4 ~ Leu3a ! by IHC,Positive; CD43 ~ Leu

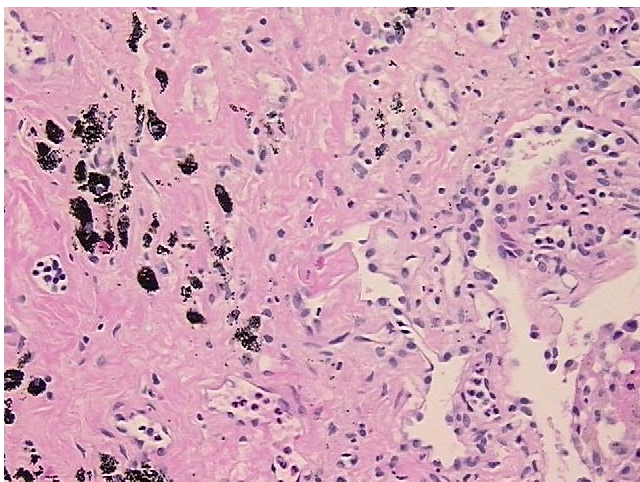
Storage: Store FFPE tissue sections at +4°C.

Stability: All FFPE tissue sections are stable for 1 year from date of purchase.

Product images:



4x Image



20x Image