

## Product datasheet for **CS705453**

### Tissue FFPE Sections, Endometrium

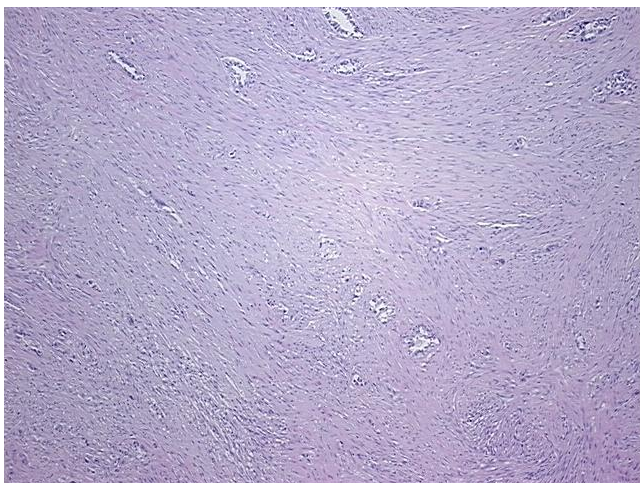
#### Product data:

Product Type:	FFPE Sections
Disease State:	Cancer
Diagnosis Category:	Endometrial Cancer
Tissue:	Endometrium
Frozen Sample ID:	PA15478889
Case ID:	CI0000007930
Tissue of Origin:	Endometrium
Site of Finding:	Omentum
Appearance:	T
Sample Diagnosis (from Pathology Verification):	Adenocarcinoma of endometrium, metastatic
Normal:	5%
Lesional:	0%
Tumor:	10%
Tumor Hypo/Acellular Stroma:	0%
Tumor Hypercellular Stroma:	85%
Necrosis:	0%
CASE Diagnosis (from medical center path report):	Adenocarcinoma of endometrium
Age:	36
Gender:	Female
Race:	White or Caucasian
Tumor Grade:	FIGO G2: Moderately differentiated

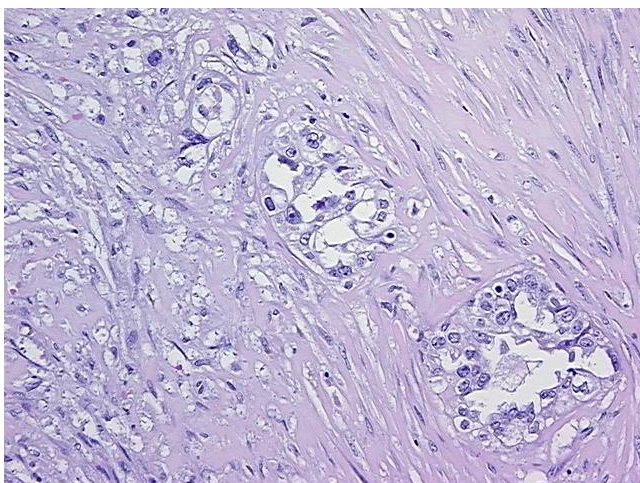


[View online »](#)

Minimum Stage Grouping:	IVB
T (Extent of Primary Tumor):	T4
N (Lymph node metastasis):	N1
M (Distant metastasis):	M1
Storage:	Store FFPE tissue sections at +4°C.
Stability:	All FFPE tissue sections are stable for 1 year from date of purchase.

**Product images:**

4x Image



20x Image