

Product datasheet for **CS705452**

Tissue FFPE Sections, Endometrium

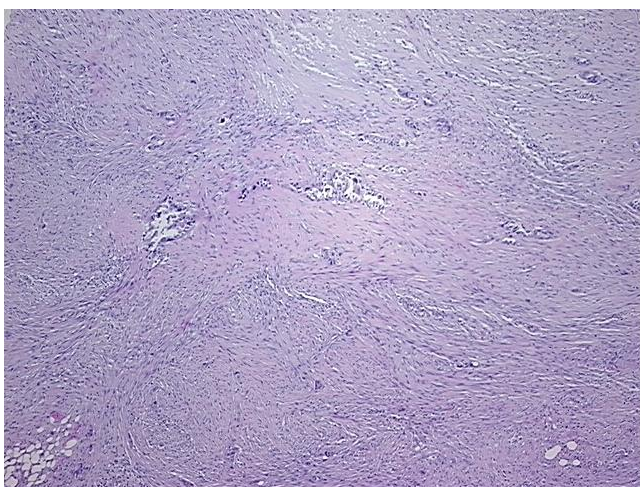
Product data:

| | |
|---|--|
| Product Type: | FFPE Sections |
| Disease State: | Cancer |
| Diagnosis Category: | Endometrial Cancer |
| Tissue: | Endometrium |
| Frozen Sample ID: | PA15478888 |
| Case ID: | CI0000007930 |
| Tissue of Origin: | Endometrium |
| Site of Finding: | Omentum |
| Appearance: | T |
| Sample Diagnosis (from Pathology Verification): | Adenocarcinoma of endometrium, metastatic |
| Normal: | 25% |
| Lesional: | 0% |
| Tumor: | 5% |
| Tumor Hypo/Acellular Stroma: | 0% |
| Tumor Hypercellular Stroma: | 70% |
| Necrosis: | 0% |
| Pathology Verification notes from H&E review: | Tumor Stroma (Cellular): Desmoplastic reaction |
| CASE Diagnosis (from medical center path report): | Adenocarcinoma of endometrium |
| Age: | 36 |
| Gender: | Female |
| Race: | White or Caucasian |

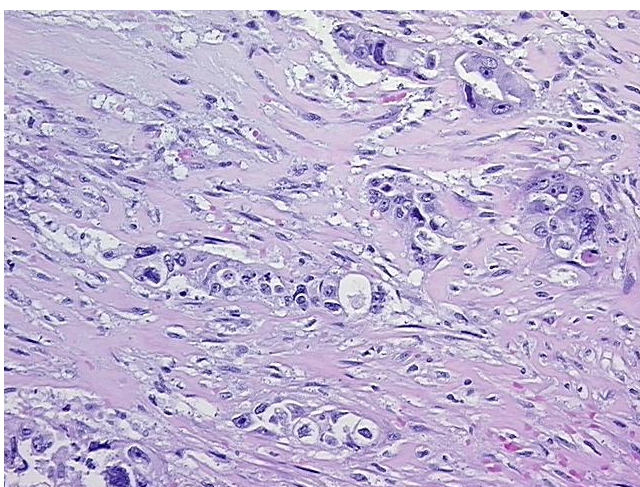


[View online »](#)

| | |
|------------------------------|---|
| Tumor Grade: | FIGO G2: Moderately differentiated |
| Minimum Stage Grouping: | IVB |
| T (Extent of Primary Tumor): | T4 |
| N (Lymph node metastasis): | N1 |
| M (Distant metastasis): | M1 |
| Storage: | Store FFPE tissue sections at +4°C. |
| Stability: | All FFPE tissue sections are stable for 1 year from date of purchase. |

Product images:

4x Image



20x Image