

Product datasheet for **CS705384**

Tissue FFPE Sections, Endometrium

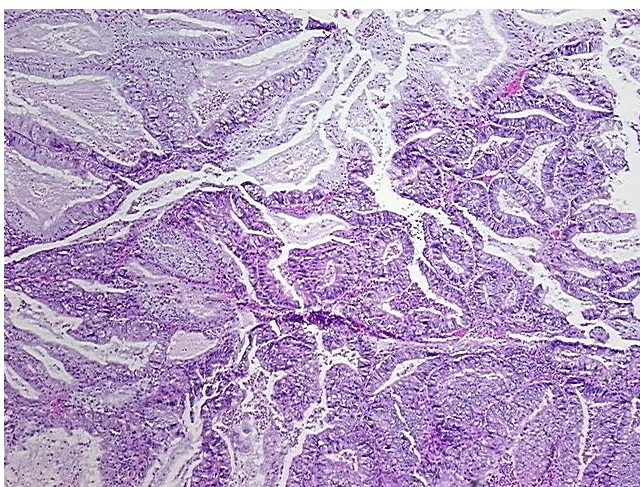
Product data:

| | |
|---|---|
| Product Type: | FFPE Sections |
| Disease State: | Cancer |
| Diagnosis Category: | Endometrial Cancer |
| Tissue: | Endometrium |
| Frozen Sample ID: | PA154786E0 |
| Case ID: | CI0000007904 |
| Tissue of Origin: | Endometrium |
| Site of Finding: | Uterus |
| Appearance: | T |
| Sample Diagnosis (from Pathology Verification): | Adenocarcinoma of endometrium, mucinous |
| Normal: | 0% |
| Lesional: | 0% |
| Tumor: | 60% |
| Tumor Hypo/Acellular Stroma: | 20% |
| Tumor Hypercellular Stroma: | 20% |
| Necrosis: | 0% |
| Pathology Verification notes from H&E review: | Tumor Stroma (Hypo/Acellular): Mucin |
| CASE Diagnosis (from medical center path report): | Adenocarcinoma of endometrium, mucinous |
| Age: | 58 |
| Gender: | Female |
| Race: | White or Caucasian |

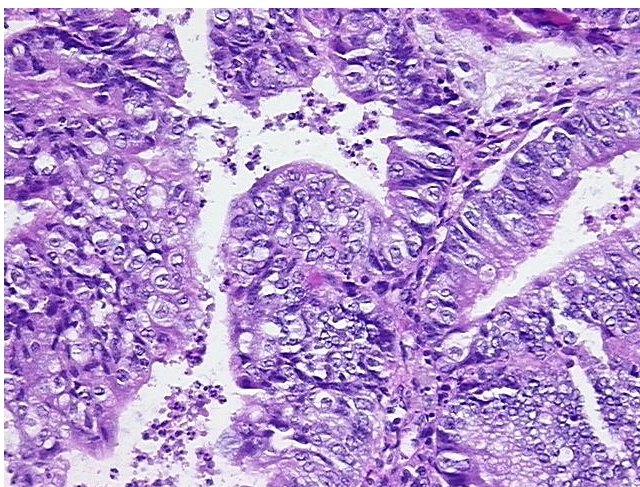


[View online »](#)

| | |
|------------------------------|---|
| Tumor Grade: | FIGO G1: Well differentiated |
| Minimum Stage Grouping: | IB |
| T (Extent of Primary Tumor): | T1b |
| N (Lymph node metastasis): | N0 |
| M (Distant metastasis): | MX |
| Storage: | Store FFPE tissue sections at +4°C. |
| Stability: | All FFPE tissue sections are stable for 1 year from date of purchase. |

Product images:

4x Image



20x Image