

Product datasheet for **CS705308**

Tissue FFPE Sections, Ovary: bilateral

Product data:

Product Type:	FFPE Sections
Disease State:	Other Disease
Diagnosis Category:	Cysts
Tissue:	Ovary
Frozen Sample ID:	PA154787A4
Case ID:	CI0000007877
Tissue of Origin:	Ovary: bilateral
Site of Finding:	Ovary: right
Appearance:	L
Sample Diagnosis (from Pathology Verification):	Cyst of ovary, follicular
Normal:	80%
Lesional:	20%
Tumor:	0%
Tumor Hypo/Acellular Stroma:	0%
Tumor Hypercellular Stroma:	0%
Necrosis:	0%
Pathology Verification notes from H&E review:	Non Tumor Structures: 50% Ovarian stroma, 20% Hilar vessels, 20% Follicles, 10% Corpus albicans
CASE Diagnosis (from medical center path report):	Cyst of ovary, follicular
Age:	40
Gender:	Female
Race:	White or Caucasian

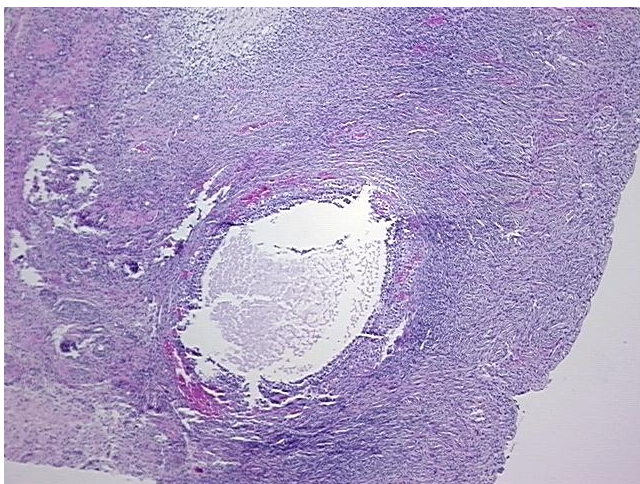


[View online »](#)

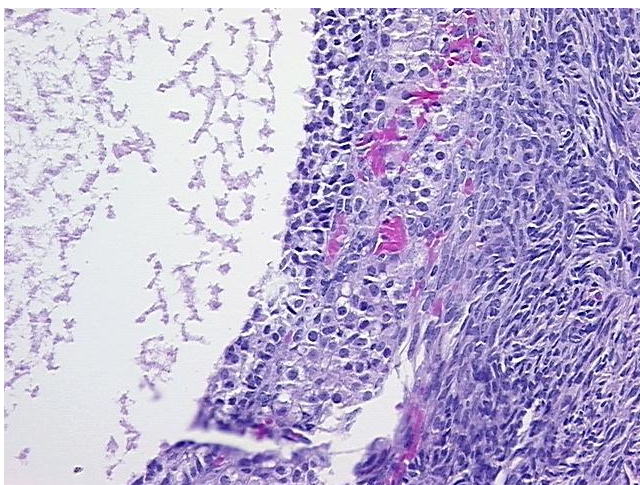
Storage: Store FFPE tissue sections at +4°C.

Stability: All FFPE tissue sections are stable for 1 year from date of purchase.

Product images:



4x Image



20x Image