

Product datasheet for **CS705185**

Tissue FFPE Sections, Kidney

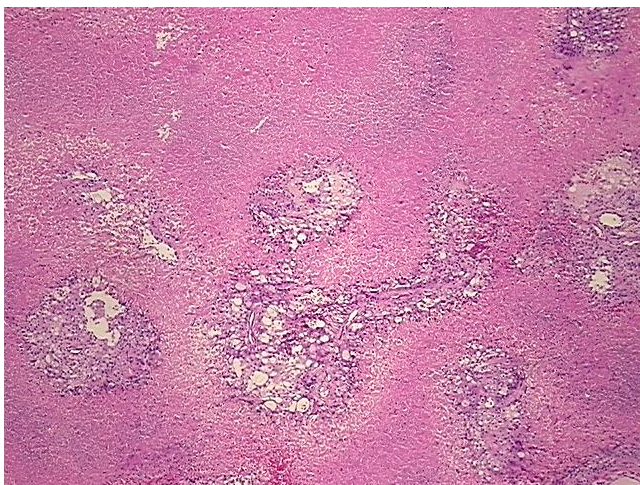
Product data:

| | |
|---|---|
| Product Type: | FFPE Sections |
| Disease State: | Cancer |
| Diagnosis Category: | Renal Cell Carcinoma |
| Tissue: | Kidney |
| Frozen Sample ID: | PA000064ED |
| Case ID: | CI0000007796 |
| Tissue of Origin: | Kidney |
| Site of Finding: | Lung |
| Appearance: | T |
| Sample Diagnosis (from Pathology Verification): | Carcinoma of kidney, renal cell, clear cell, metastatic |
| Normal: | 0% |
| Lesional: | 0% |
| Tumor: | 45% |
| Tumor Hypo/Acellular Stroma: | 5% |
| Tumor Hypercellular Stroma: | 0% |
| Necrosis: | 50% |
| CASE Diagnosis (from medical center path report): | Carcinoma of kidney, renal cell, clear cell, metastatic |
| Age: | 70 |
| Gender: | Male |
| Race: | White or Caucasian |
| Tumor Grade: | Not Reported |

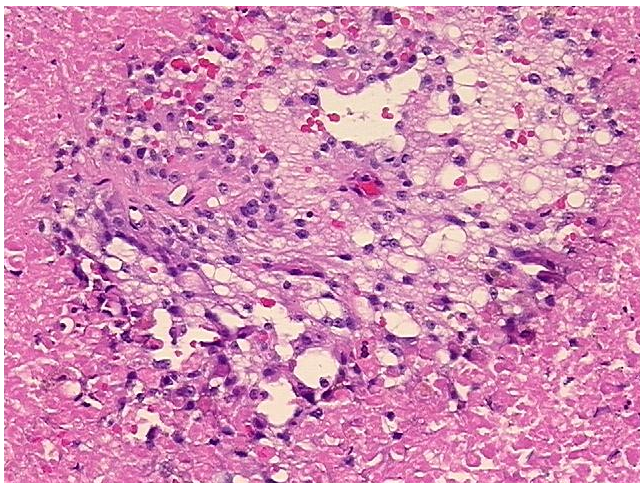


[View online »](#)

| | |
|------------------------------|---|
| Minimum Stage Grouping: | IV |
| T (Extent of Primary Tumor): | TX |
| N (Lymph node metastasis): | NX |
| M (Distant metastasis): | M1 |
| Storage: | Store FFPE tissue sections at +4°C. |
| Stability: | All FFPE tissue sections are stable for 1 year from date of purchase. |

Product images:

4x Image



20x Image