

## Product datasheet for **CS704930**

### Tissue FFPE Sections, Lung

#### Product data:

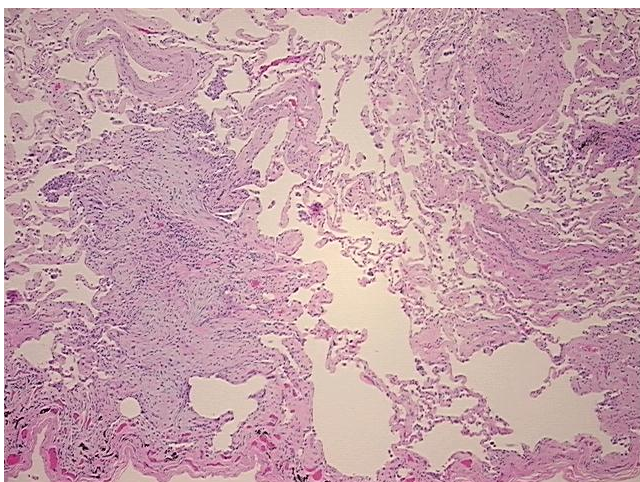
Product Type:	FFPE Sections
Disease State:	Other Disease
Diagnosis Category:	Pneumonia
Tissue:	Lung
Frozen Sample ID:	PA00005ADB
Case ID:	CI0000007612
Tissue of Origin:	Lung
Site of Finding:	Lung
Appearance:	L
Sample Diagnosis (from Pathology Verification):	Bronchiolitis obliterans organizing pneumonia
Normal:	0%
Lesional:	100%
Tumor:	0%
Tumor Hypo/Acellular Stroma:	0%
Tumor Hypercellular Stroma:	0%
Necrosis:	0%
Pathology Verification notes from H&E review:	organizing pneumonia with no residual normal architecture, 1+ MAC
CASE Diagnosis (from medical center path report):	Adenocarcinoma of lung, papillary
Age:	77
Gender:	Male
Race:	White or Caucasian



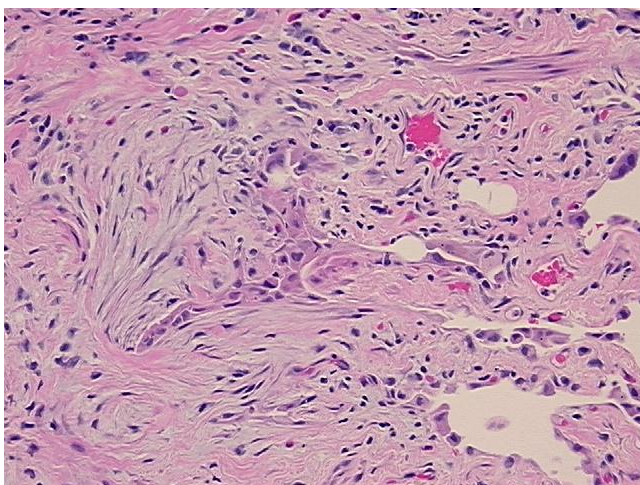
[View online »](#)

<b>Tumor Grade:</b>	AJCC G1: Well differentiated
<b>Minimum Stage Grouping:</b>	IA
<b>T (Extent of Primary Tumor):</b>	T1
<b>N (Lymph node metastasis):</b>	NX
<b>M (Distant metastasis):</b>	MX
<b>Diagnostic Test Results:</b>	Thyroglobulin ~ TGB ~ THYRO,Negative; Vimentin ~ VIM ! by IHC,Negative; Cytokeratin 7 ~ CK7 ! by IHC,Positive; Cytokeratin 20 ~ CK20 ! by IHC,Positive, focal; Cytokeratin CAM5.2 ~ CAM5.2 ! by IHC,Positive; Cytokeratin AE1/AE3 ~ AE1/AE3 ! by
<b>Storage:</b>	Store FFPE tissue sections at +4°C.
<b>Stability:</b>	All FFPE tissue sections are stable for 1 year from date of purchase.

### Product images:



4x Image



20x Image