

Product datasheet for **CS704787**

Tissue FFPE Sections, Pleura

Product data:

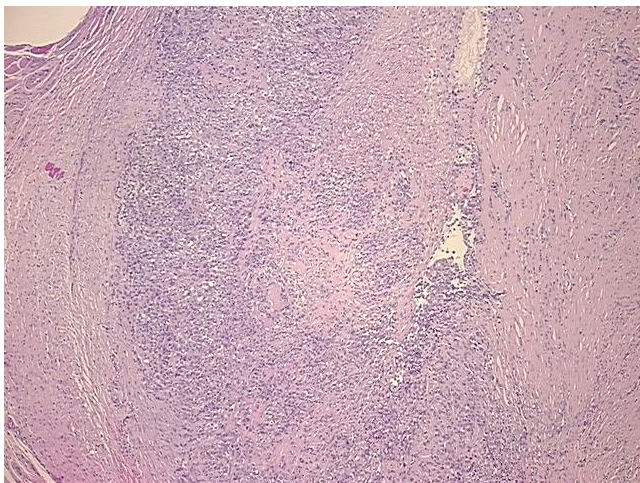
Product Type:	FFPE Sections
Disease State:	Cancer
Diagnosis Category:	Mesothelioma
Tissue:	Lung
Frozen Sample ID:	PA15477DD1
Case ID:	CI0000007512
Tissue of Origin:	Pleura
Site of Finding:	Pleura
Appearance:	T
Sample Diagnosis (from Pathology Verification):	Mesothelioma of pleura, mixed
Normal:	10%
Lesional:	0%
Tumor:	70%
Tumor Hypo/Acellular Stroma:	15%
Tumor Hypercellular Stroma:	5%
Necrosis:	0%
Pathology Verification notes from H&E review:	Tumor Stroma (Cellular): Desmoplastic reaction; Tumor Stroma (Hypo/Acellular): Fibrosis
CASE Diagnosis (from medical center path report):	Mesothelioma of pleura, mixed
Age:	69
Gender:	Male
Race:	White or Caucasian



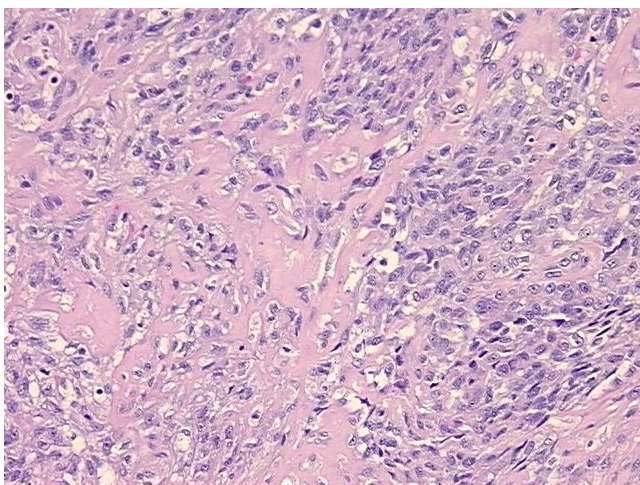
[View online »](#)

Tumor Grade:	Not Reported
Minimum Stage Grouping:	I
T (Extent of Primary Tumor):	T1
N (Lymph node metastasis):	NX
M (Distant metastasis):	MX
Diagnostic Test Results:	Epithelial specific antigen ~ BerEP4 ~ MOC31 ! by IHC,Positive in scattered cells; Cytokeratin CAM5.2 ~ CAM5.2 ! by IHC,Positive, strong; CD66e ~ CEACAM5 ! by IHC,Negative; Cytokeratin AE1/AE3 ~ AE1/AE3 ! by IHC,Positive, strong; Calretinin,Posi
Storage:	Store FFPE tissue sections at +4°C.
Stability:	All FFPE tissue sections are stable for 1 year from date of purchase.

Product images:



4x Image



20x Image