

Product datasheet for **CS704778**

Tissue FFPE Sections, Breast

Product data:

Product Type:	FFPE Sections
Disease State:	Other Disease
Diagnosis Category:	Hyperplasia
Tissue:	Breast
Frozen Sample ID:	PA11B418ED
Case ID:	CI0000007498
Tissue of Origin:	Breast
Site of Finding:	Breast
Appearance:	L
Sample Diagnosis (from Pathology Verification):	Ductal hyperplasia of breast
Normal:	95%
Lesional:	5%
Tumor:	0%
Tumor Hypo/Acellular Stroma:	0%
Tumor Hypercellular Stroma:	0%
Necrosis:	0%
Pathology Verification notes from H&E review:	Lesion (5%): involvement of terminal ducts and lobules 100%; Non Tumor Structures: 30% Glandular epithelium, 50% Stroma, 20% Adipose tissue
CASE Diagnosis (from medical center path report):	Ductal hyperplasia of breast
Age:	44
Gender:	Female
Race:	White or Caucasian

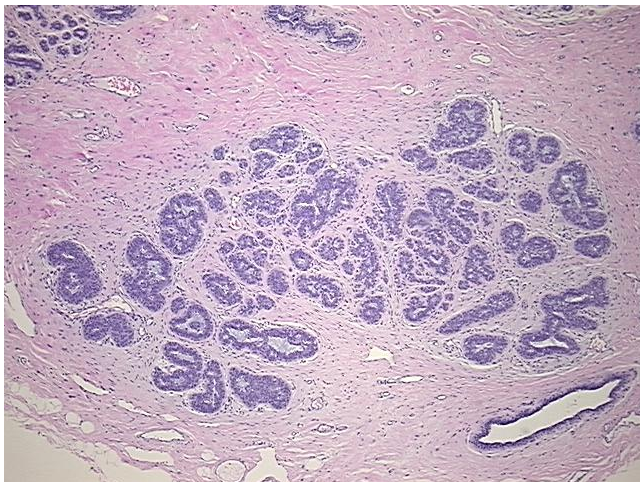


[View online »](#)

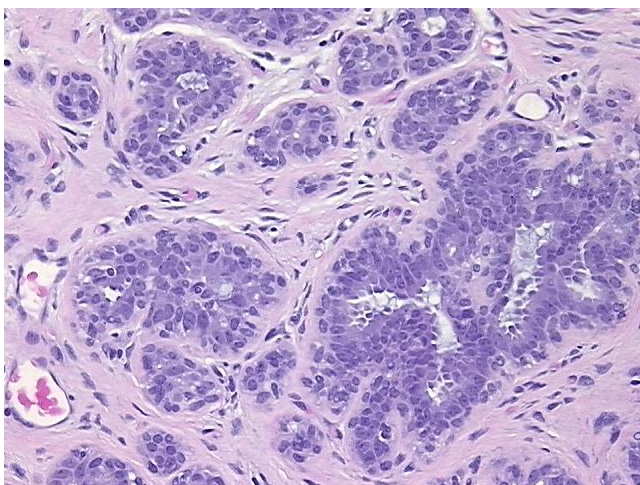
Storage: Store FFPE tissue sections at +4°C.

Stability: All FFPE tissue sections are stable for 1 year from date of purchase.

Product images:



4x Image



20x Image