

## Product datasheet for **CS704676**

### Tissue FFPE Sections, Endometrium

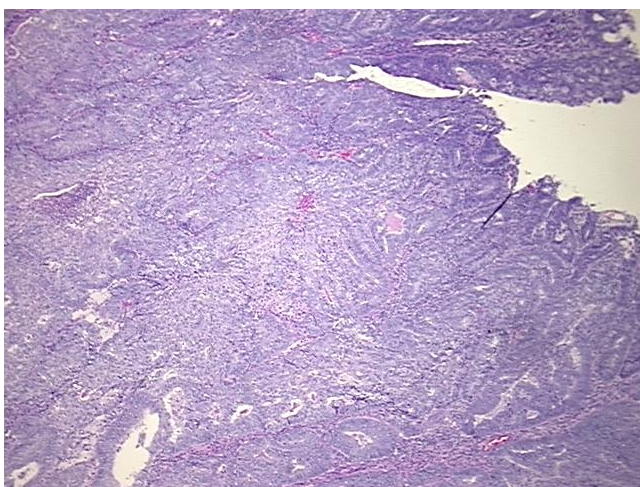
#### Product data:

Product Type:	FFPE Sections
Disease State:	Cancer
Diagnosis Category:	Endometrial Cancer
Tissue:	Endometrium
Frozen Sample ID:	PA00006181
Case ID:	CI0000007457
Tissue of Origin:	Endometrium
Site of Finding:	Uterus
Appearance:	T
Sample Diagnosis (from Pathology Verification):	Adenocarcinoma of endometrium, endometrioid, squamous features, focal
Normal:	60%
Lesional:	0%
Tumor:	30%
Tumor Hypo/Acellular Stroma:	0%
Tumor Hypercellular Stroma:	10%
Necrosis:	0%
Pathology Verification notes from H&E review:	Non Tumor Structures: 100% Myometrium
CASE Diagnosis (from medical center path report):	Adenocarcinoma of endometrium, endometrioid, squamous features, focal
Age:	74
Gender:	Female
Race:	White or Caucasian

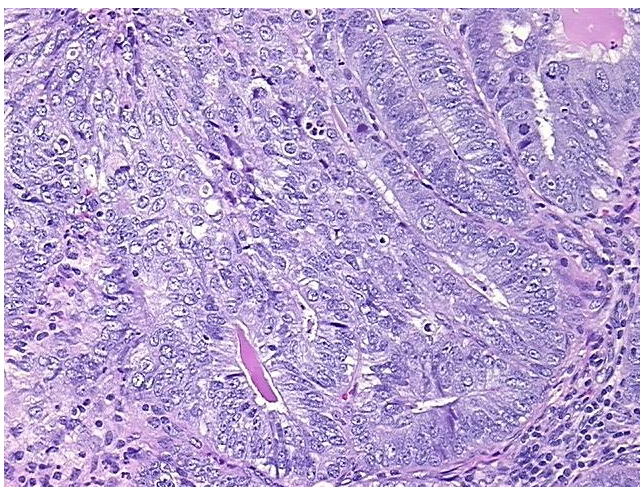


[View online »](#)

Tumor Grade:	FIGO G2: Moderately differentiated
Minimum Stage Grouping:	IIA
T (Extent of Primary Tumor):	T2a
N (Lymph node metastasis):	N0
M (Distant metastasis):	MX
Storage:	Store FFPE tissue sections at +4°C.
Stability:	All FFPE tissue sections are stable for 1 year from date of purchase.

**Product images:**

4x Image



20x Image