

Product datasheet for **CS704633**

Tissue FFPE Sections, Colon

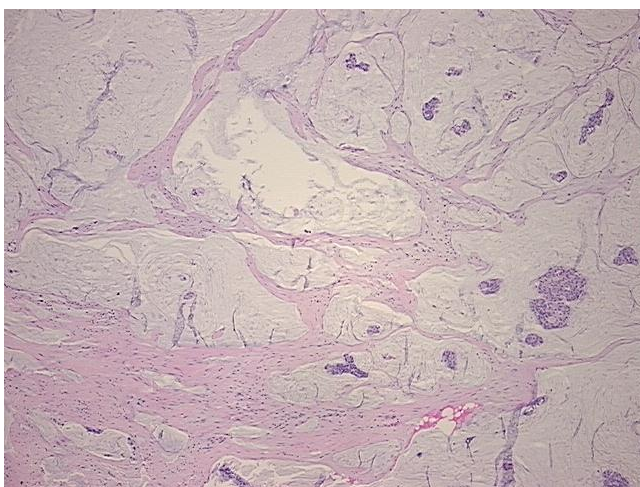
Product data:

Product Type:	FFPE Sections
Disease State:	Cancer
Diagnosis Category:	Colorectal Cancer
Tissue:	Colon
Frozen Sample ID:	PA0F334567
Case ID:	CI0000007431
Tissue of Origin:	Colon
Site of Finding:	Lymph node
Appearance:	T
Sample Diagnosis (from Pathology Verification):	Adenocarcinoma of colon, mucinous, metastatic
Normal:	10%
Lesional:	0%
Tumor:	10%
Tumor Hypo/Acellular Stroma:	80%
Tumor Hypercellular Stroma:	0%
Necrosis:	0%
Pathology Verification notes from H&E review:	acellular tumor stroma: mucin
CASE Diagnosis (from medical center path report):	Adenocarcinoma of colon, mucinous, metastatic
Age:	73
Gender:	Female
Race:	White or Caucasian

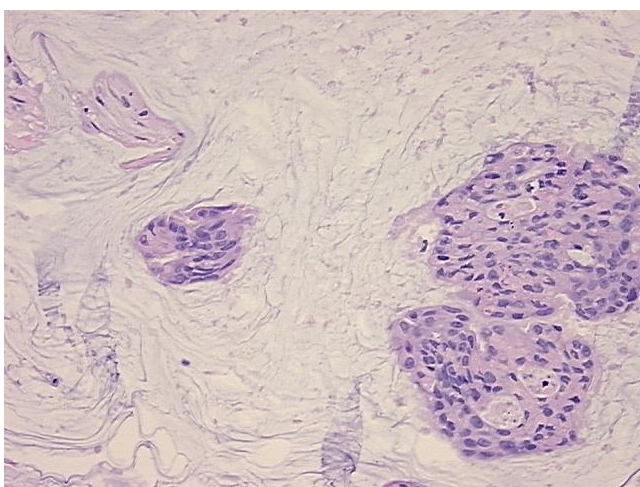


[View online »](#)

Tumor Grade:	Not Reported
Minimum Stage Grouping:	IIIA
T (Extent of Primary Tumor):	TX
N (Lymph node metastasis):	N1
M (Distant metastasis):	MX
Storage:	Store FFPE tissue sections at +4°C.
Stability:	All FFPE tissue sections are stable for 1 year from date of purchase.

Product images:

4x Image



20x Image