

## Product datasheet for **CS704565**

### Tissue FFPE Sections, Brain

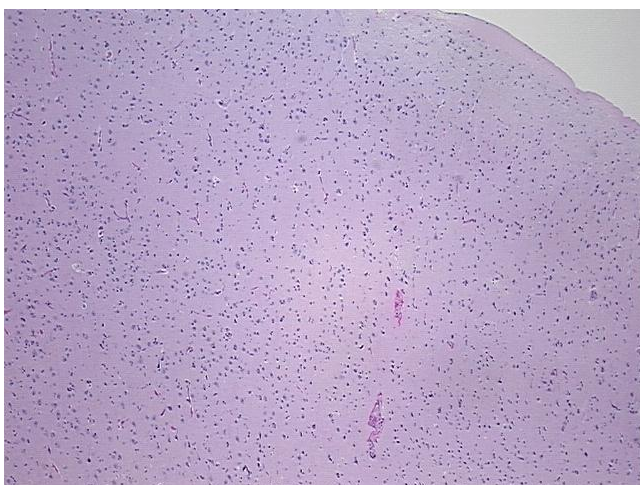
#### Product data:

|   |                         |
|---|-------------------------|
| Product Type:                                     | FFPE Sections           |
| Disease State:                                    | Other Disease           |
| Diagnosis Category:                               | Gliosis                 |
| Tissue:   | Brain                   |
| Frozen Sample ID:                                 | PA0F33459B              |
| Case ID:  | CI0000007383            |
| Tissue of Origin:                                 | Brain                   |
| Site of Finding:                                  | Brain                   |
| Appearance:                                       | L                       |
| Sample Diagnosis (from Pathology Verification):   | Gliosis                 |
| Normal:   | 0%                      |
| Lesional:   | 100%                    |
| Tumor:  | 0%                      |
| Tumor Hypo/Acellular Stroma:                      | 0%                      |
| Tumor Hypercellular Stroma:                       | 0%                      |
| Necrosis:   | 0%                      |
| CASE Diagnosis (from medical center path report): | Astrocytoma, anaplastic |
| Age:  | 39                      |
| Gender:   | Male                    |
| Race:   | White or Caucasian      |
| Tumor Grade:                                      | WHO Grade III           |

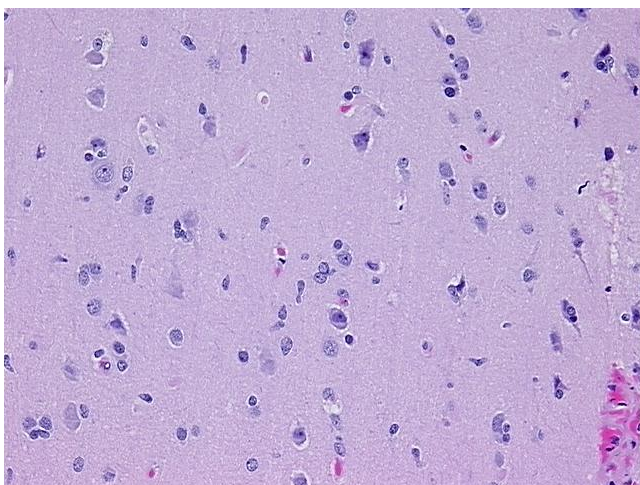


[View online »](#)

|                              |   |
|------------------------------|---|
| Minimum Stage Grouping:      | Not Reported  |
| T (Extent of Primary Tumor): | Not Reported  |
| N (Lymph node metastasis):   | Not Reported  |
| M (Distant metastasis):      | Not Reported  |
| Storage:                     | Store FFPE tissue sections at +4°C.                                   |
| Stability:                   | All FFPE tissue sections are stable for 1 year from date of purchase. |

**Product images:**

4x Image



20x Image