

## Product datasheet for **CS704441**

### Tissue FFPE Sections, Endometriotic tissue

#### Product data:

Product Type:	FFPE Sections
Disease State:	Other Disease
Diagnosis Category:	Endometriosis
Tissue:	Endometriotic tissue
Frozen Sample ID:	PA154773B4
Case ID:	CI0000007318
Tissue of Origin:	Endometriotic tissue
Site of Finding:	Ovary: left
Appearance:	L
Sample Diagnosis (from Pathology Verification):	Endometriosis
Normal:	90%
Lesional:	10%
Tumor:	0%
Tumor Hypo/Acellular Stroma:	0%
Tumor Hypercellular Stroma:	0%
Necrosis:	0%
Pathology Verification notes from H&E review:	normal: 90% ovarian stroma, 10% hilar vessels
CASE Diagnosis (from medical center path report):	Endometriosis
Age:	42
Gender:	Female
Race:	White or Caucasian

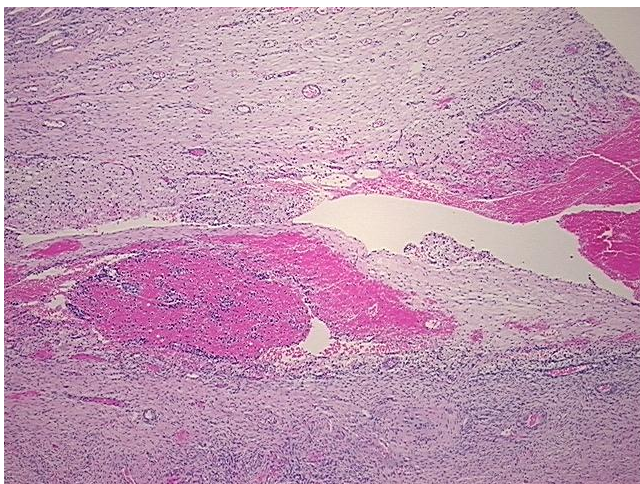


[View online »](#)

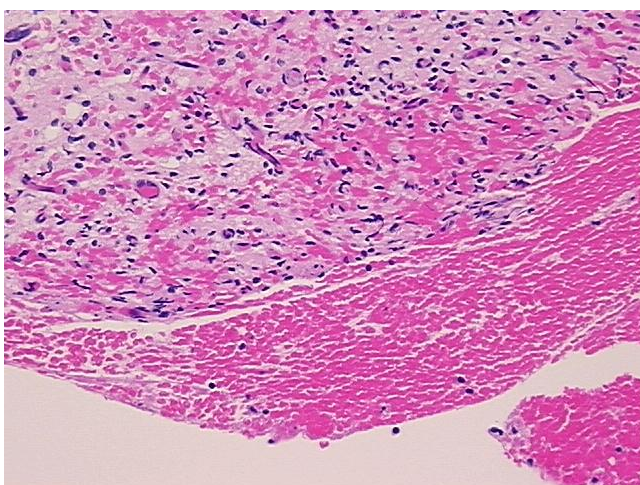
**Storage:** Store FFPE tissue sections at +4°C.

**Stability:** All FFPE tissue sections are stable for 1 year from date of purchase.

**Product images:**



4x Image



20x Image