

## Product datasheet for **CS704425**

### Tissue FFPE Sections, Lung

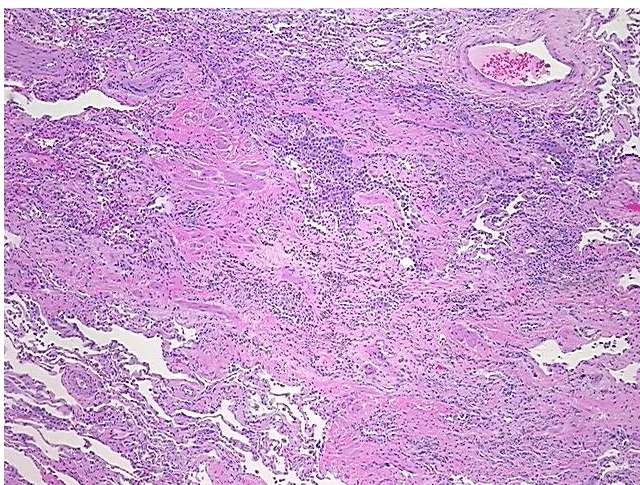
#### Product data:

Product Type:	FFPE Sections
Disease State:	Other Disease
Diagnosis Category:	Pneumonia
Tissue:	Lung
Frozen Sample ID:	PA0F3345EA
Case ID:	CI0000007303
Tissue of Origin:	Lung
Site of Finding:	Lung
Appearance:	L
Sample Diagnosis (from Pathology Verification):	Pneumonia, interstitial, chronic
Normal:	80%
Lesional:	20%
Tumor:	0%
Tumor Hypo/Acellular Stroma:	0%
Tumor Hypercellular Stroma:	0%
Necrosis:	0%
Pathology Verification notes from H&E review:	70% alveoli, 20% bronchi, 10% fibrovascular septa, 2-3+ IAM, 2-3+ LY, 0+ PMN
CASE Diagnosis (from medical center path report):	Carcinoma of lung, non-small cell
Age:	63
Gender:	Male
Race:	Not reported

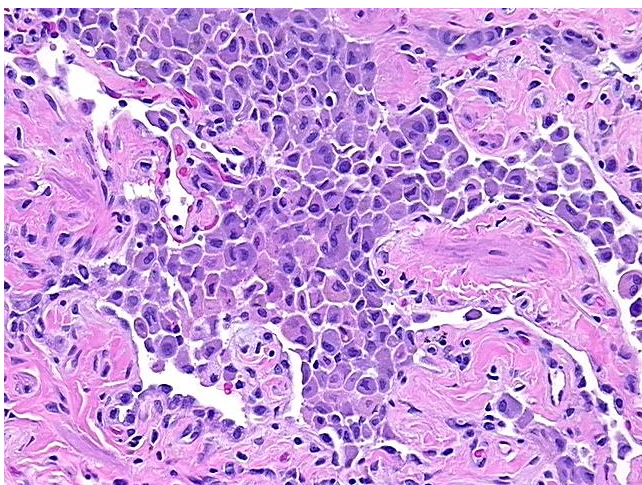


[View online »](#)

<b>Tumor Grade:</b>	AJCC G3: Poorly differentiated
<b>Minimum Stage Grouping:</b>	IIB
<b>T (Extent of Primary Tumor):</b>	T2
<b>N (Lymph node metastasis):</b>	N1
<b>M (Distant metastasis):</b>	MX
<b>Diagnostic Test Results:</b>	Cytokeratins (5 and 6) ~ CK5,6 ! by IHC,Positive, weak; Neuron specific enolase ~ NSE ! by IHC,Negative; Synaptophysin ~ SYN ! by IHC,Negative; Chromogranin A ~ Parathyroid secretory protein 1 ! by IHC,Negative
<b>Storage:</b>	Store FFPE tissue sections at +4°C.
<b>Stability:</b>	All FFPE tissue sections are stable for 1 year from date of purchase.

**Product images:**

4x Image



20x Image