

Product datasheet for **CS704313**

Tissue FFPE Sections, Colon

Product data:

| | |
|---------------------------------------------------|--------------------------------------|
| Product Type: | FFPE Sections |
| Disease State: | Other Disease |
| Diagnosis Category: | Inflammatory Bowel Disease (IBD) |
| Tissue: | Colon |
| Frozen Sample ID: | PA000051E4 |
| Case ID: | CI0000007232 |
| Tissue of Origin: | Colon |
| Site of Finding: | Colon |
| Appearance: | L |
| Sample Diagnosis (from Pathology Verification): | Crohns disease |
| Normal: | 0% |
| Lesional: | 100% |
| Tumor: | 0% |
| Tumor Hypo/Acellular Stroma: | 0% |
| Tumor Hypercellular Stroma: | 0% |
| Necrosis: | 0% |
| Pathology Verification notes from H&E review: | 2% mucosa, 38% submucosa, 60% muscle |
| CASE Diagnosis (from medical center path report): | Crohns disease |
| Age: | 37 |
| Gender: | Male |
| Race: | Not reported |

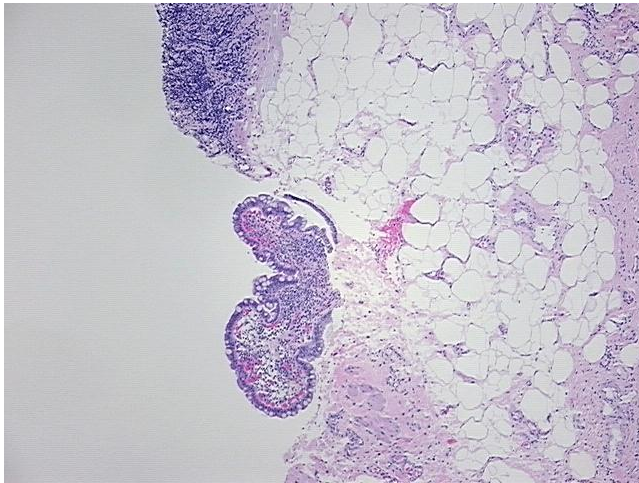


[View online »](#)

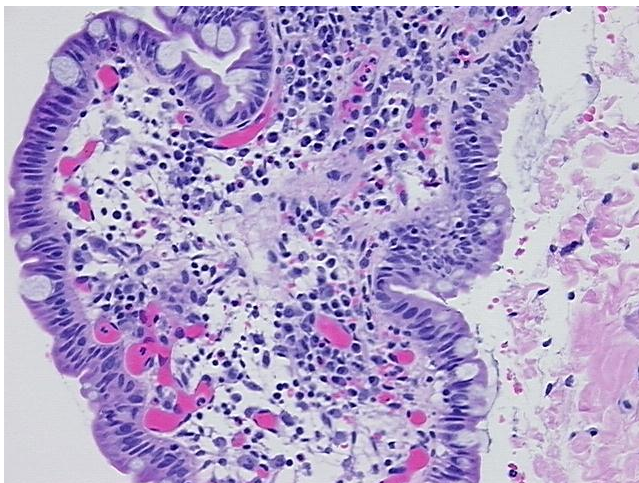
Storage: Store FFPE tissue sections at +4°C.

Stability: All FFPE tissue sections are stable for 1 year from date of purchase.

Product images:



4x Image



20x Image