

Product datasheet for CS704118

Tissue FFPE Sections, Endometrium

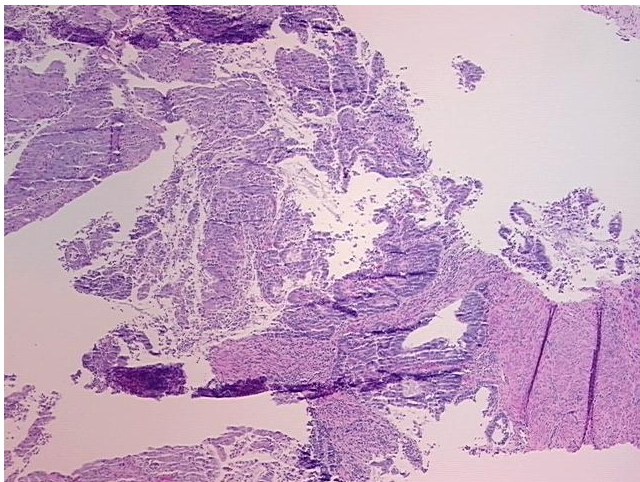
Product data:

Product Type:	FFPE Sections
Disease State:	Cancer
Diagnosis Category:	Endometrial Cancer
Tissue:	Endometrium
Frozen Sample ID:	PA000059E0
Case ID:	CI0000007125
Tissue of Origin:	Endometrium
Site of Finding:	Endometrium
Appearance:	T
Sample Diagnosis (from Pathology Verification):	Adenocarcinoma of endometrium
Normal:	80%
Lesional:	0%
Tumor:	15%
Tumor Hypo/Acellular Stroma:	0%
Tumor Hypercellular Stroma:	5%
Necrosis:	0%
Pathology Verification notes from H&E review:	adenocarcinoma of endometrium, mixed endometrioid and papillary serous types; tumor stroma: 100% mixed inflammatory cells; normal: 5% endometrial glands, 5% endometrial stroma, 90% myometrium
CASE Diagnosis (from medical center path report):	Adenocarcinoma of endometrium, endometrioid, papillary serous
Age:	79
Gender:	Female

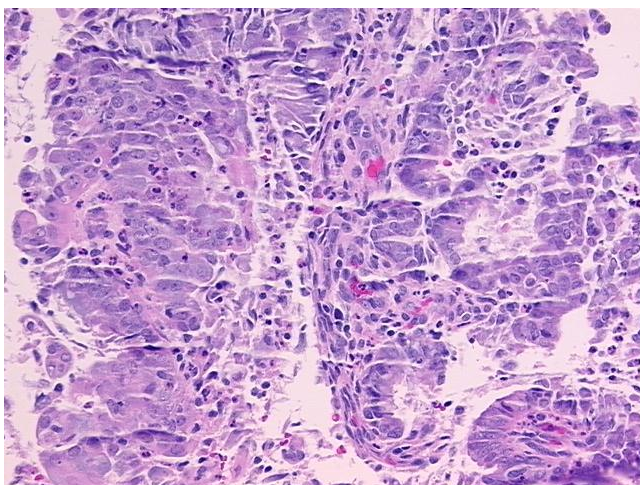


[View online »](#)

Race:	White or Caucasian
Tumor Grade:	FIGO G3: Poorly differentiated
Minimum Stage Grouping:	IB
T (Extent of Primary Tumor):	T1b
N (Lymph node metastasis):	N0
M (Distant metastasis):	MX
Storage:	Store FFPE tissue sections at +4°C.
Stability:	All FFPE tissue sections are stable for 1 year from date of purchase.

Product images:

4x Image



20x Image