

## Product datasheet for **CS704091**

### Tissue FFPE Sections, Nose

#### Product data:

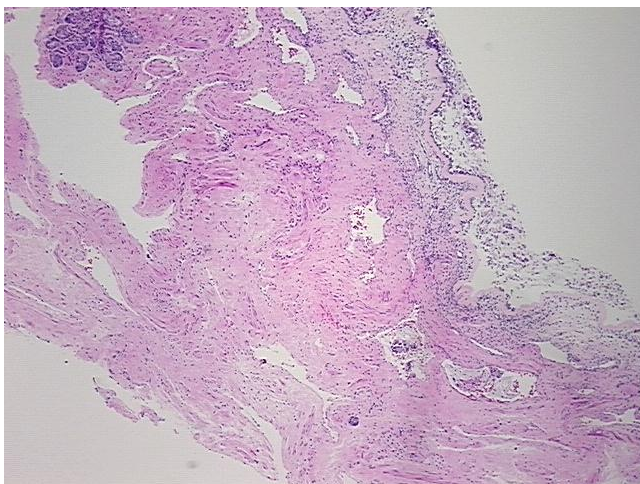
Product Type:	FFPE Sections
Disease State:	Other Disease
Diagnosis Category:	Sinusitis
Tissue:	Nose
Frozen Sample ID:	PA000059D5
Case ID:	CI0000007106
Tissue of Origin:	Nose
Site of Finding:	Nose
Appearance:	L
Sample Diagnosis (from Pathology Verification):	Sinusitis, chronic
Normal:	0%
Lesional:	100%
Tumor:	0%
Tumor Hypo/Acellular Stroma:	0%
Tumor Hypercellular Stroma:	0%
Necrosis:	0%
Pathology Verification notes from H&E review:	10% mucosa, 90% lamina propria; 1+ MIX
CASE Diagnosis (from medical center path report):	Sinusitis, chronic
Age:	45
Gender:	Male
Race:	Not reported


[View online »](#)

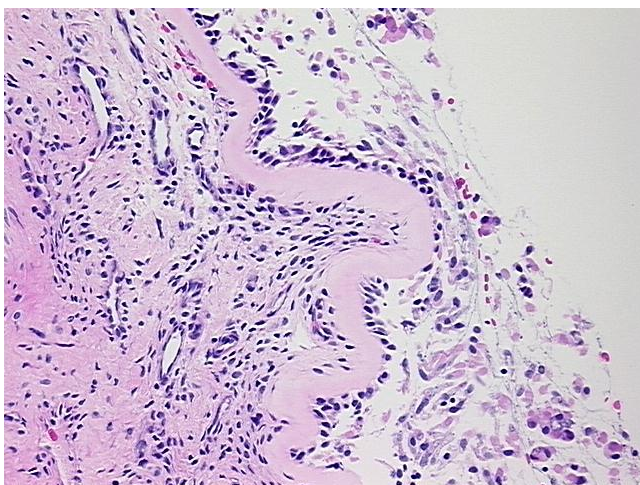
**Storage:** Store FFPE tissue sections at +4°C.

**Stability:** All FFPE tissue sections are stable for 1 year from date of purchase.

**Product images:**



4x Image



20x Image