

## Product datasheet for **CS703976**

### Tissue FFPE Sections, Ovary: left

#### Product data:

Product Type:	FFPE Sections
Disease State:	Other Disease
Diagnosis Category:	Cysts
Tissue:	Ovary
Frozen Sample ID:	PA0F333CB8
Case ID:	CI0000007031
Tissue of Origin:	Ovary: left
Site of Finding:	Ovary: left
Appearance:	L
Sample Diagnosis (from Pathology Verification):	Cyst of ovary, serous
Normal:	40%
Lesional:	60%
Tumor:	0%
Tumor Hypo/Acellular Stroma:	0%
Tumor Hypercellular Stroma:	0%
Necrosis:	0%
Pathology Verification notes from H&E review:	Non Tumor Structures: 25% Epithelium, 75% Stroma
CASE Diagnosis (from medical center path report):	Cyst of ovary, serous
Age:	59
Gender:	Female
Race:	White or Caucasian

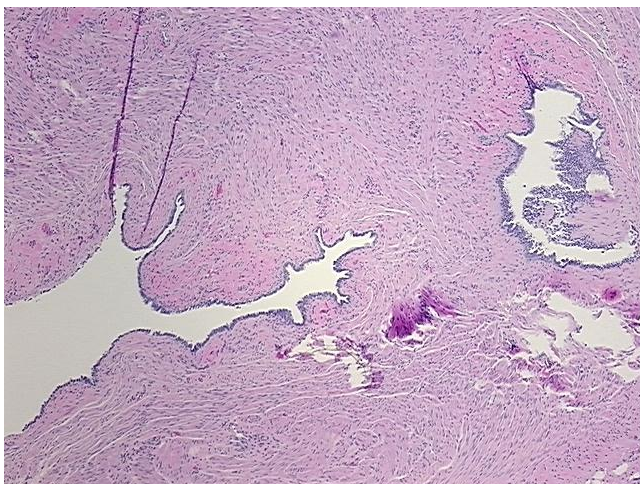


[View online »](#)

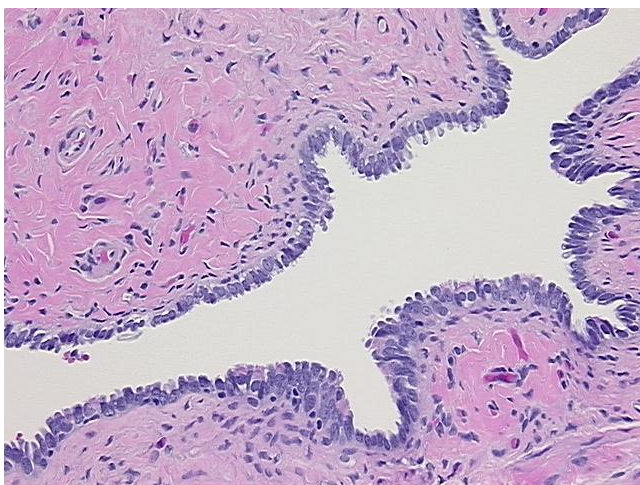
**Storage:** Store FFPE tissue sections at +4°C.

**Stability:** All FFPE tissue sections are stable for 1 year from date of purchase.

**Product images:**



4x Image



20x Image