

Product datasheet for CS703911

Tissue FFPE Sections, Lung

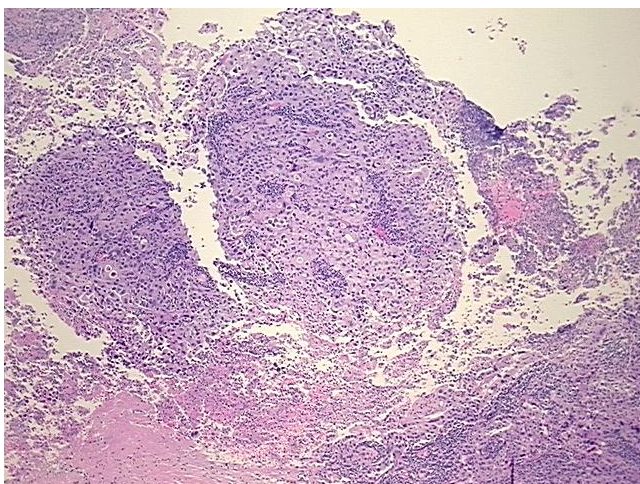
Product data:

| | |
|---|-----------------------------------|
| Product Type: | FFPE Sections |
| Disease State: | Cancer |
| Diagnosis Category: | Lung Cancer |
| Tissue: | Lung |
| Frozen Sample ID: | PA000054B5 |
| Case ID: | CI0000006993 |
| Tissue of Origin: | Lung |
| Site of Finding: | Lung |
| Appearance: | T |
| Sample Diagnosis (from Pathology Verification): | Carcinoma of lung, non-small cell |
| Normal: | 0% |
| Lesional: | 0% |
| Tumor: | 30% |
| Tumor Hypo/Acellular Stroma: | 0% |
| Tumor Hypercellular Stroma: | 10% |
| Necrosis: | 60% |
| CASE Diagnosis (from medical center path report): | Carcinoma of lung, non-small cell |
| Age: | 57 |
| Gender: | Female |
| Race: | White or Caucasian |
| Tumor Grade: | AJCC G3: Poorly differentiated |

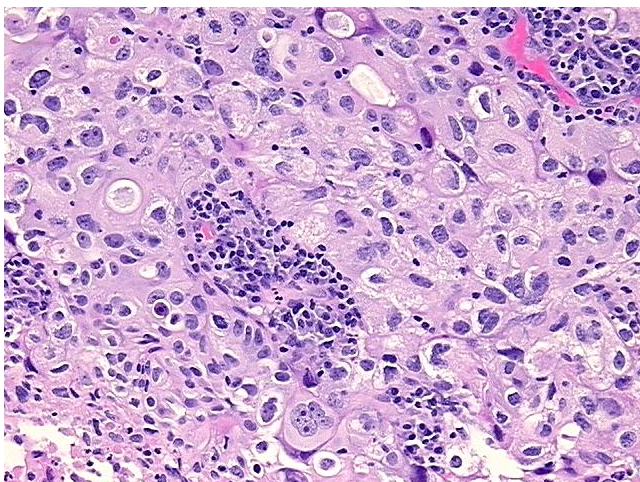


[View online »](#)

| | |
|------------------------------|--|
| Minimum Stage Grouping: | IA |
| T (Extent of Primary Tumor): | T1 |
| N (Lymph node metastasis): | N0 |
| M (Distant metastasis): | MX |
| Diagnostic Test Results: | GMS ~ Grocott methenamine silver stain,Negative; Alpha-1-fetoprotein ~ AFP ! by IHC,Negative |
| Storage: | Store FFPE tissue sections at +4°C. |
| Stability: | All FFPE tissue sections are stable for 1 year from date of purchase. |

Product images:

4x Image



20x Image