

## Product datasheet for CS703873

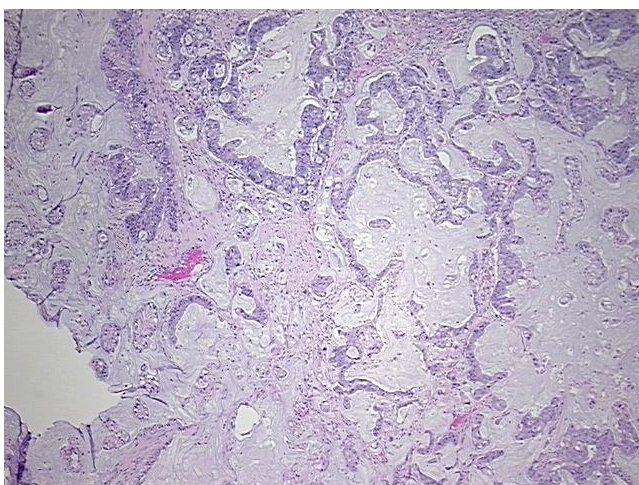
### Tissue FFPE Sections, Colon: right

#### Product data:

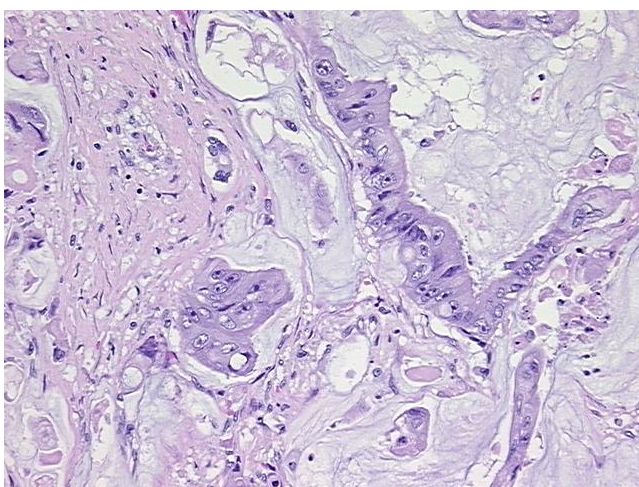
Product Type:	FFPE Sections
Disease State:	Cancer
Diagnosis Category:	Colorectal Cancer
Tissue:	Colon
Frozen Sample ID:	PA000054A7
Case ID:	CI0000006975
Tissue of Origin:	Colon: right
Site of Finding:	Liver
Appearance:	T
Sample Diagnosis (from Pathology Verification):	Adenocarcinoma of colon, mucinous, metastatic
Normal:	20%
Lesional:	0%
Tumor:	20%
Tumor Hypo/Acellular Stroma:	50%
Tumor Hypercellular Stroma:	10%
Necrosis:	0%
Pathology Verification notes from H&E review:	Tumor Stroma (Hypo/Acellular): Mucin
CASE Diagnosis (from medical center path report):	Adenocarcinoma of colon, mucinous, metastatic
Age:	47
Gender:	Male
Race:	White or Caucasian


[View online »](#)

<b>Tumor Grade:</b>	AJCC G2: Moderately differentiated
<b>Minimum Stage Grouping:</b>	IV
<b>T (Extent of Primary Tumor):</b>	TX
<b>N (Lymph node metastasis):</b>	NX
<b>M (Distant metastasis):</b>	M1
<b>Storage:</b>	Store FFPE tissue sections at +4°C.
<b>Stability:</b>	All FFPE tissue sections are stable for 1 year from date of purchase.

**Product images:**


4x Image



20x Image