

Product datasheet for **CS703858**

Tissue FFPE Sections, Uterus and adnexa

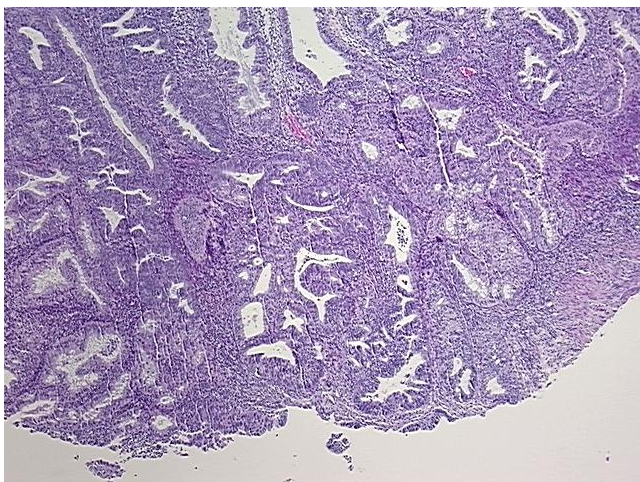
Product data:

| | |
|---|--|
| Product Type: | FFPE Sections |
| Disease State: | Cancer |
| Diagnosis Category: | Endometrial Cancer |
| Tissue: | Endometrium |
| Frozen Sample ID: | PA154787C4 |
| Case ID: | CI0000006965 |
| Tissue of Origin: | Uterus and adnexa |
| Site of Finding: | Endometrium |
| Appearance: | T |
| Sample Diagnosis (from Pathology Verification): | Adenocarcinoma of endometrium or ovary, endometrioid |
| Normal: | 10% |
| Lesional: | 0% |
| Tumor: | 80% |
| Tumor Hypo/Acellular Stroma: | 0% |
| Tumor Hypercellular Stroma: | 10% |
| Necrosis: | 0% |
| Pathology Verification notes from H&E review: | Tumor: not possible to determine with certainty whether this represents a metastas, to the ovary, metastasis to the endometrium, or synchronous primary neoplasms, no myometrial invasion seen |
| CASE Diagnosis (from medical center path report): | Adenocarcinoma of endometrium, endometrioid |
| Age: | 50 |
| Gender: | Female |

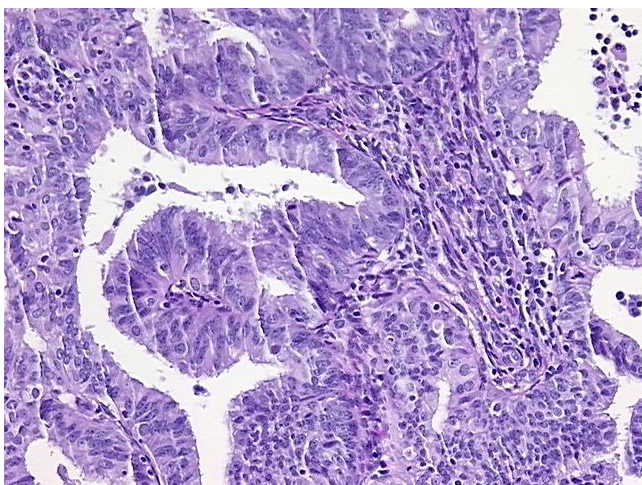


[View online »](#)

| | |
|------------------------------|---|
| Race: | White or Caucasian |
| Tumor Grade: | FIGO G2: Moderately differentiated |
| Minimum Stage Grouping: | IIIA |
| T (Extent of Primary Tumor): | T3a |
| N (Lymph node metastasis): | N0 |
| M (Distant metastasis): | MX |
| Storage: | Store FFPE tissue sections at +4°C. |
| Stability: | All FFPE tissue sections are stable for 1 year from date of purchase. |

Product images:

4x Image



20x Image