

## Product datasheet for **CS703804**

### Tissue FFPE Sections, Colon: sigmoid

#### Product data:

|                                                   |                                     |
|---------------------------------------------------|-------------------------------------|
| Product Type:                                     | FFPE Sections                       |
| Disease State:                                    | Cancer                              |
| Diagnosis Category:                               | Colorectal Cancer                   |
| Tissue:                                           | Colon                               |
| Frozen Sample ID:                                 | PA0F33472E                          |
| Case ID:                                          | CI0000006940                        |
| Tissue of Origin:                                 | Colon: sigmoid                      |
| Site of Finding:                                  | Liver                               |
| Appearance:                                       | T                                   |
| Sample Diagnosis (from Pathology Verification):   | Adenocarcinoma of colon, metastatic |
| Normal:                                           | 3%                                  |
| Lesional:                                         | 0%                                  |
| Tumor:                                            | 20%                                 |
| Tumor Hypo/Acellular Stroma:                      | 7%                                  |
| Tumor Hypercellular Stroma:                       | 0%                                  |
| Necrosis:                                         | 70%                                 |
| CASE Diagnosis (from medical center path report): | Adenocarcinoma of colon, metastatic |
| Age:                                              | 51                                  |
| Gender:                                           | Female                              |
| Race:                                             | White or Caucasian                  |
| Tumor Grade:                                      | Not Reported                        |



[View online »](#)

Minimum Stage Grouping: IV

T (Extent of Primary Tumor): TX

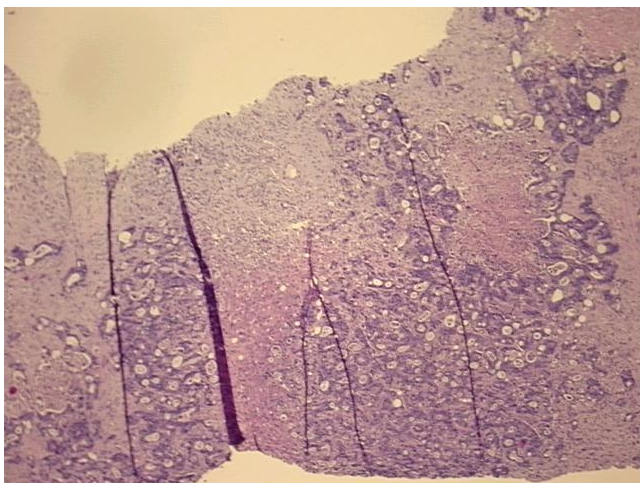
N (Lymph node metastasis): NX

M (Distant metastasis): M1

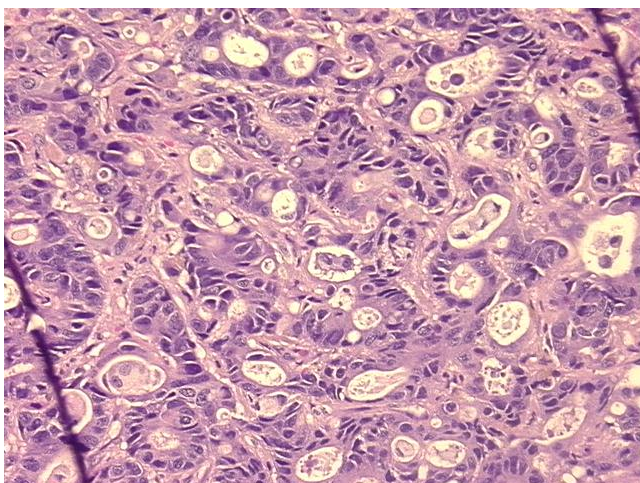
Storage: Store FFPE tissue sections at +4°C.

Stability: All FFPE tissue sections are stable for 1 year from date of purchase.

### Product images:



4x Image



20x Image