

## Product datasheet for **CS703801**

### Tissue FFPE Sections, Colon: sigmoid

#### Product data:

Product Type:	FFPE Sections
Disease State:	Cancer
Diagnosis Category:	Colorectal Cancer
Tissue:	Colon
Frozen Sample ID:	PA0000530A
Case ID:	CI0000006940
Tissue of Origin:	Colon: sigmoid
Site of Finding:	Liver
Appearance:	T
Sample Diagnosis (from Pathology Verification):	Adenocarcinoma of colon, metastatic
Normal:	5%
Lesional:	0%
Tumor:	25%
Tumor Hypo/Acellular Stroma:	0%
Tumor Hypercellular Stroma:	10%
Necrosis:	60%
CASE Diagnosis (from medical center path report):	Adenocarcinoma of colon, metastatic
Age:	51
Gender:	Female
Race:	White or Caucasian
Tumor Grade:	Not Reported



[View online »](#)

Minimum Stage Grouping: IV

T (Extent of Primary Tumor): TX

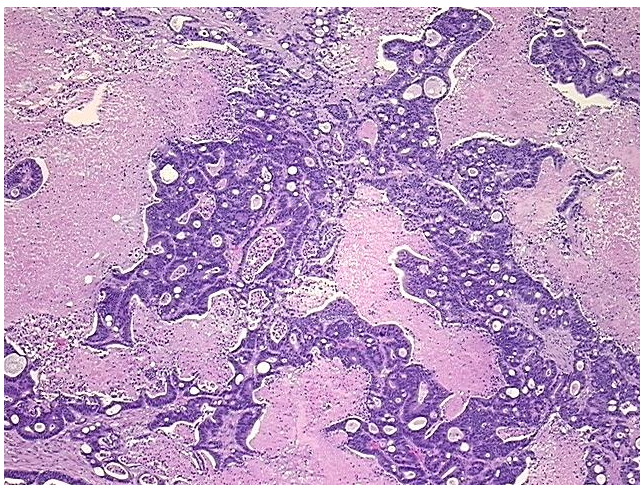
N (Lymph node metastasis): NX

M (Distant metastasis): M1

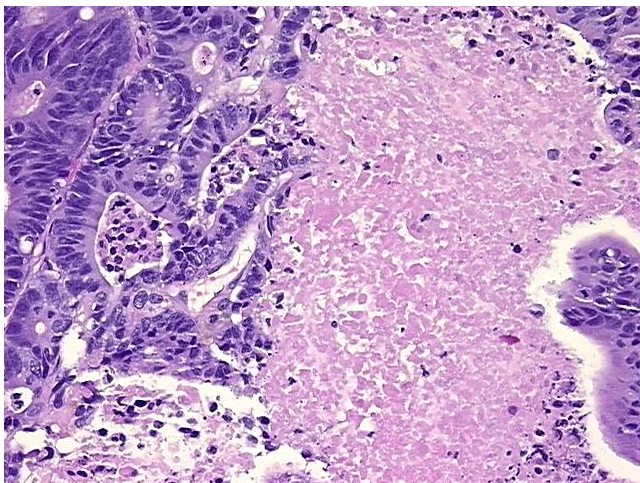
Storage: Store FFPE tissue sections at +4°C.

Stability: All FFPE tissue sections are stable for 1 year from date of purchase.

### Product images:



4x Image



20x Image